

PR38A Antibody (C-term)

Affinity Purified Rabbit Polyclonal Antibody (Pab)

Catalog # AP9930b

Product Information

Application	WB, IHC-P, FC, E
Primary Accession	Q8NAV1
Other Accession	Q4FZQ6 , Q4FK66 , Q8HXXH6 , Q0P5I6
Reactivity	Human
Predicted	Bovine, Monkey, Mouse, Xenopus
Host	Rabbit
Clonality	Polyclonal
Isotype	Rabbit IgG
Clone Names	RB25755
Calculated MW	37477
Antigen Region	283-312

Additional Information

Gene ID	84950
Other Names	Pre-mRNA-splicing factor 38A, PRPF38A
Target/Specificity	This PR38A antibody is generated from rabbits immunized with a KLH conjugated synthetic peptide between 283-312 amino acids from the C-terminal region of human PR38A.
Dilution	WB~~1:1000 IHC-P~~1:100~500 FC~~1:10~50 E~~Use at an assay dependent concentration.
Format	Purified polyclonal antibody supplied in PBS with 0.09% (W/V) sodium azide. This antibody is purified through a protein A column, followed by peptide affinity purification.
Storage	Maintain refrigerated at 2-8°C for up to 2 weeks. For long term storage store at -20°C in small aliquots to prevent freeze-thaw cycles.
Precautions	PR38A Antibody (C-term) is for research use only and not for use in diagnostic or therapeutic procedures.

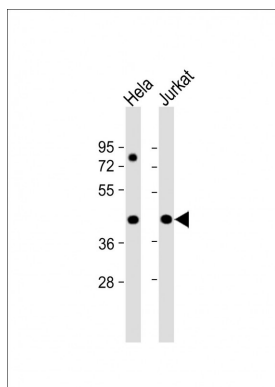
Protein Information

Name	PRPF38A
Function	Involved in pre-mRNA splicing as a component of the spliceosome.

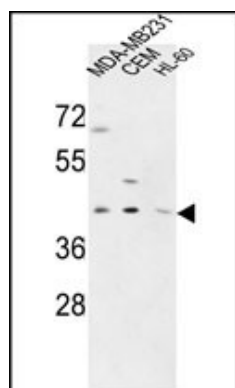
References

Beausoleil, S.A., et al. Proc. Natl. Acad. Sci. U.S.A. 101(33):12130-12135(2004)

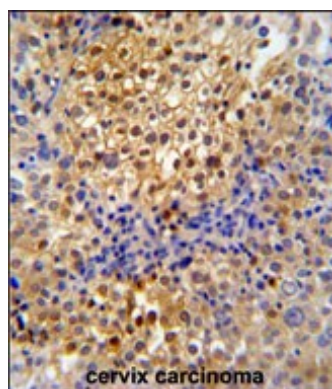
Images



All lanes : Anti-PR38A Antibody (C-term) at 1:1000 dilution
Lane 1: HeLa whole cell lysate Lane 2: Jurkat whole cell lysate
Lysates/proteins at 20 µg per lane. Secondary Goat Anti-Rabbit IgG, (H+L), Peroxidase conjugated at 1/10000 dilution. Predicted band size : 37 kDa
Blocking/Dilution buffer: 5% NFDM/TBST.

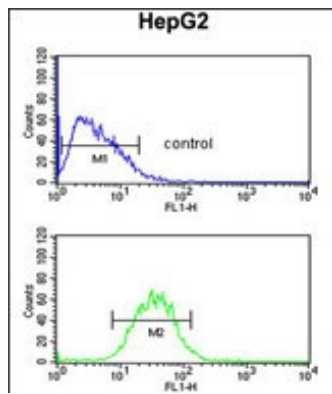


PR38A Antibody (C-term) (Cat. #AP9930b) western blot analysis in MDA-MB231,CEM,HL-60 cell line lysates (35ug/lane).This demonstrates the PR38A antibody detected the PR38A protein (arrow).



PR38A Antibody (C-term) (Cat. #AP9930b) immunohistochemistry analysis in formalin fixed and paraffin embedded human cervix carcinoma followed by peroxidase conjugation of the secondary antibody and DAB staining. This data demonstrates the use of the PR38A Antibody (C-term) for immunohistochemistry. Clinical relevance has not been evaluated.

PR38A Antibody (C-term) (Cat. #AP9930b) flow cytometric analysis of HepG2 cells (bottom histogram) compared to a negative control cell (top histogram).FITC-conjugated goat-anti-rabbit secondary antibodies were used for the analysis.



Please note: All products are 'FOR RESEARCH USE ONLY. NOT FOR USE IN DIAGNOSTIC OR THERAPEUTIC PROCEDURES'.