

SP5 Antibody (C-term)

Purified Rabbit Polyclonal Antibody (Pab)

Catalog # AP9937b

Product Information

Application	WB, FC, E
Primary Accession	Q6BEB4
Reactivity	Human, Mouse
Host	Rabbit
Clonality	Polyclonal
Isotype	Rabbit IgG
Clone Names	RB15102
Calculated MW	41964
Antigen Region	369-398

Additional Information

Gene ID	389058
Other Names	Transcription factor Sp5, SP5
Target/Specificity	This SP5 antibody is generated from rabbits immunized with a KLH conjugated synthetic peptide between 369-398 amino acids from the C-terminal region of human SP5.
Dilution	WB~~1:1000 FC~~1:10~50 E~~Use at an assay dependent concentration.
Format	Purified polyclonal antibody supplied in PBS with 0.09% (W/V) sodium azide. This antibody is prepared by Saturated Ammonium Sulfate (SAS) precipitation followed by dialysis against PBS.
Storage	Maintain refrigerated at 2-8°C for up to 2 weeks. For long term storage store at -20°C in small aliquots to prevent freeze-thaw cycles.
Precautions	SP5 Antibody (C-term) is for research use only and not for use in diagnostic or therapeutic procedures.

Protein Information

Name	SP5
Function	Binds to GC boxes promoters elements. Probable transcriptional activator that has a role in the coordination of changes in transcription required to generate pattern in the developing embryo (By similarity).
Cellular Location	Nucleus.

Background

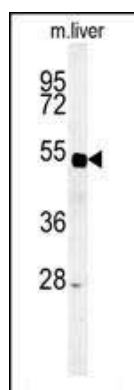
SP5 binds to GC boxes promoters elements. SP5 probable transcriptional activator that has a role in the coordination of changes in transcription required to generate pattern in the developing embryo.

References

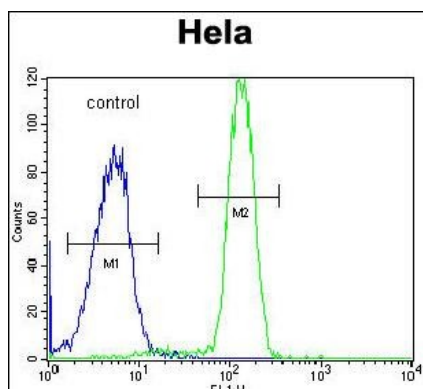
Chen, Y., et al. Biochem. Biophys. Res. Commun. 340(3):758-766(2006)

Suske, G., et al. Genomics 85(5):551-556(2005)

Images



Western blot analysis of SP5 Antibody (C-term) (Cat. #AP9937b) in mouse liver tissue lysates (35ug/lane).SP5 (arrow) was detected using the purified Pab.



SP5 Antibody (C-term) (Cat. #AP9937b) flow cytometric analysis of Hela cells (right histogram) compared to a negative control cell (left histogram).FITC-conjugated goat-anti-rabbit secondary antibodies were used for the analysis.

Please note: All products are 'FOR RESEARCH USE ONLY. NOT FOR USE IN DIAGNOSTIC OR THERAPEUTIC PROCEDURES'.