

# SNX27 Antibody (Center)

Affinity Purified Rabbit Polyclonal Antibody (Pab)

Catalog # AP9947c

## Product Information

---

<b>Application</b>	WB, E
<b>Primary Accession</b>	<a href="#">Q96L92</a>
<b>Other Accession</b>	<a href="#">Q8K4V4</a> , <a href="#">Q3UHD6</a> , <a href="#">A5PKA5</a>
<b>Reactivity</b>	Human
<b>Predicted</b>	Bovine, Mouse, Rat
<b>Host</b>	Rabbit
<b>Clonality</b>	Polyclonal
<b>Isotype</b>	Rabbit IgG
<b>Clone Names</b>	RB22263
<b>Calculated MW</b>	61265
<b>Antigen Region</b>	313-340

## Additional Information

---

<b>Gene ID</b>	81609
<b>Other Names</b>	Sorting nexin-27, SNX27, KIAA0488
<b>Target/Specificity</b>	This SNX27 antibody is generated from rabbits immunized with a KLH conjugated synthetic peptide between 313-340 amino acids from the Central region of human SNX27.
<b>Dilution</b>	WB~~1:1000 E~~Use at an assay dependent concentration.
<b>Format</b>	Purified polyclonal antibody supplied in PBS with 0.09% (W/V) sodium azide. This antibody is purified through a protein A column, followed by peptide affinity purification.
<b>Storage</b>	Maintain refrigerated at 2-8°C for up to 2 weeks. For long term storage store at -20°C in small aliquots to prevent freeze-thaw cycles.
<b>Precautions</b>	SNX27 Antibody (Center) is for research use only and not for use in diagnostic or therapeutic procedures.

## Protein Information

---

<b>Name</b>	SNX27
<b>Synonyms</b>	KIAA0488
<b>Function</b>	Involved in the retrograde transport from endosome to plasma membrane,

a trafficking pathway that promotes the recycling of internalized transmembrane proteins. Following internalization, endocytosed transmembrane proteins are delivered to early endosomes and recycled to the plasma membrane instead of being degraded in lysosomes. SNX27 specifically binds and directs sorting of a subset of transmembrane proteins containing a PDZ-binding motif at the C- terminus: following interaction with target transmembrane proteins, associates with the retromer complex, preventing entry into the lysosomal pathway, and promotes retromer-tubule based plasma membrane recycling. SNX27 also binds with the WASH complex. Interacts with membranes containing phosphatidylinositol-3-phosphate (PtdIns(3P)). May participate in establishment of natural killer cell polarity. Recruits CYTIP to early endosomes.

#### Cellular Location

Early endosome membrane; Peripheral membrane protein. Cytoplasm, cytosol. Note=Localizes to immunological synapse in T-cells. In T- cells, recruited from the cytosol to sorting endosomes by phosphoinositide-3-kinase products

#### Tissue Location

Widely expressed. Expressed in cells of hematopoietic origin (at protein level).

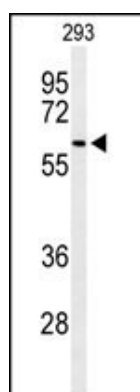
## Background

SNX27 encodes a member of the sorting nexin family, a diverse group of cytoplasmic and membrane-associated proteins involved in endocytosis of plasma membrane receptors and protein trafficking through these compartments. All members of this protein family contain a phosphoinositide binding domain (PX domain). A highly similar protein in mouse is responsible for the specific recruitment of an isoform of serotonin 5-hydroxytryptamine 4 receptor into early endosomes, suggesting the analogous role for the human protein.

## References

Lunn, M.L., et al. Nat. Neurosci. 10(10):1249-1259(2007)  
 Nassirpour, R., et al. Channels (Austin) 1(5):331-333(2007)  
 MacNeil, A.J., et al. Biochem. Biophys. Res. Commun. 359(4):848-853(2007)  
 Rincon, E., et al. Mol. Cell Proteomics 6(6):1073-1087(2007)

## Images



Western blot analysis of SNX27 Antibody (Center) (Cat. #AP9947c) in 293 cell line lysates (35ug/lane). SNX27 (arrow) was detected using the purified Pab.

Please note: All products are 'FOR RESEARCH USE ONLY. NOT FOR USE IN DIAGNOSTIC OR THERAPEUTIC PROCEDURES'.