

BASP1 Antibody (Center)

Affinity Purified Rabbit Polyclonal Antibody (Pab)

Catalog # AP9970a

Product Information

Application	WB, E
Primary Accession	P80723
Reactivity	Human
Host	Rabbit
Clonality	Polyclonal
Isotype	Rabbit IgG
Calculated MW	22693
Antigen Region	123-150

Additional Information

Gene ID	10409
Other Names	Brain acid soluble protein 1, 22 kDa neuronal tissue-enriched acidic protein, Neuronal axonal membrane protein NAP-22, BASP1, NAP22
Target/Specificity	This BASP1 antibody is generated from rabbits immunized with a KLH conjugated synthetic peptide between 123-150 amino acids from the Central region of human BASP1.
Dilution	WB~~1:2000 E~~Use at an assay dependent concentration.
Format	Purified polyclonal antibody supplied in PBS with 0.05% (V/V) Proclin 300. This antibody is purified through a protein A column, followed by peptide affinity purification.
Storage	Maintain refrigerated at 2-8°C for up to 2 weeks. For long term storage store at -20°C in small aliquots to prevent freeze-thaw cycles.
Precautions	BASP1 Antibody (Center) is for research use only and not for use in diagnostic or therapeutic procedures.

Protein Information

Name	BASP1
Synonyms	NAP22
Cellular Location	Cell membrane; Lipid-anchor. Cell projection, growth cone. Note=Associated with the membranes of growth cones that form the tips of elongating axons

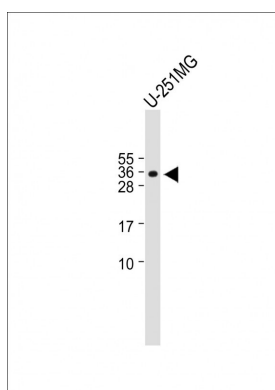
Background

BASP1 encodes a membrane bound protein with several transient phosphorylation sites and PEST motifs. Conservation of proteins with PEST sequences among different species supports their functional significance. PEST sequences typically occur in proteins with high turnover rates. Immunological characteristics of this protein are species specific. This protein also undergoes N-terminal myristoylation.

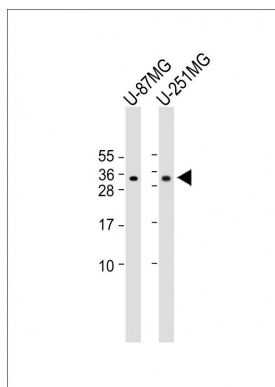
References

Tsunedomi, R., et al. Int. J. Oncol. 36(1):205-212(2010)
Behan, A.T., et al. Mol. Psychiatry 14(6):601-613(2009)
Uzumcu, A., et al. J Genet Genomics 36(4):251-256(2009)
Green, L.M., et al. Nucleic Acids Res. 37(2):431-440(2009)

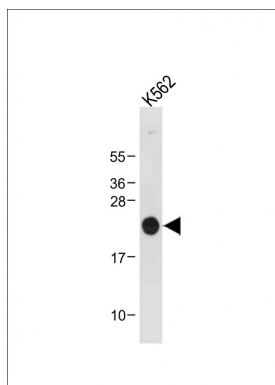
Images



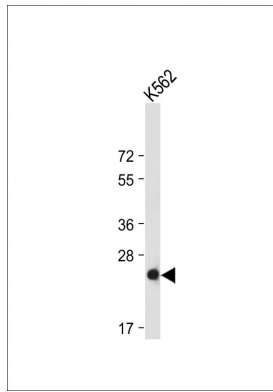
Anti-BASP1 Antibody (Center) at 1:1000 dilution + U-251 MG whole cell lysate Lysates/proteins at 20 µg per lane. Secondary Goat Anti-Rabbit IgG, (H+L), Peroxidase conjugated at 1/10000 dilution. Predicted band size : 23 kDa Blocking/Dilution buffer: 5% NFDM/TBST.



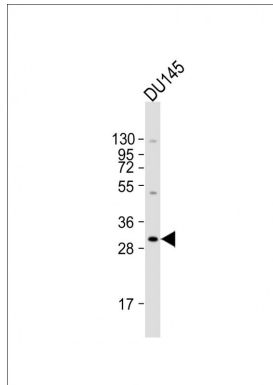
All lanes : Anti-BASP1 Antibody (Center) at 1:2000 dilution
Lane 1: U-87 MG whole cell lysate Lane 2: U-251 MG whole cell lysate Lysates/proteins at 20 µg per lane. Secondary Goat Anti-Rabbit IgG, (H+L), Peroxidase conjugated at 1/10000 dilution. Predicted band size : 23 kDa Blocking/Dilution buffer: 5% NFDM/TBST.



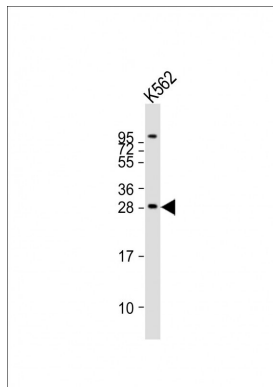
Anti-BASP1 Antibody (Center) at 1:1000 dilution + K562 whole cell lysate Lysates/proteins at 20 µg per lane. Secondary Goat Anti-Rabbit IgG, (H+L), Peroxidase conjugated at 1/10000 dilution. Predicted band size : 23 kDa Blocking/Dilution buffer: 5% NFDM/TBST.



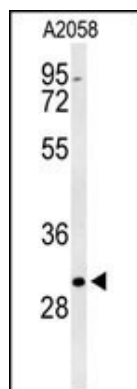
Anti-BASP1 Antibody (Center) at 1:2000 dilution + K562 whole cell lysates/ proteins at 20 µg per lane. Secondary Goat Anti-Rabbit IgG, (H+L), Peroxidase conjugated at 1/10000 dilution. Predicted band size : 23 kDa Blocking/Dilution buffer: 5% NFDM/TBST.



Anti-BASP1 Antibody (Center) at 1:2000 dilution + DU145 whole cell lysates/ proteins at 20 µg per lane. Secondary Goat Anti-Rabbit IgG, (H+L), Peroxidase conjugated at 1/10000 dilution. Predicted band size : 23 kDa Blocking/Dilution buffer: 5% NFDM/TBST.

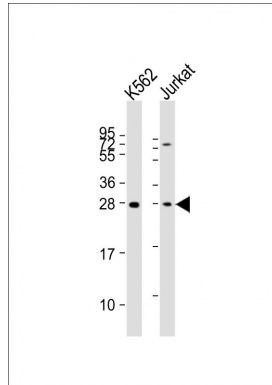
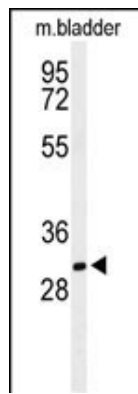


Anti-BASP1 Antibody (Center) at 1:2000 dilution + K562 whole cell lysates/ proteins at 20 µg per lane. Secondary Goat Anti-Rabbit IgG, (H+L), Peroxidase conjugated at 1/10000 dilution. Predicted band size : 23 kDa Blocking/Dilution buffer: 5% NFDM/TBST.



Western blot analysis of BASP1 Antibody (Center) (Cat. #AP9970a) in A2058 cell line lysates (35ug/lane). BASP1 (arrow) was detected using the purified Pab.

Western blot analysis of BASP1 Antibody (Center) (Cat. #AP9970a) in mouse bladder tissue lysates (35ug/lane). BASP1 (arrow) was detected using the purified Pab.



All lanes : Anti-BASP1 Antibody (Center) at 1:2000 dilution
 Lane 1: K562 whole cell lysates Lane 2: Jurkat whole cell
 lysates Lysates/proteins at 20 µg per lane. Secondary
 Goat Anti-Rabbit IgG, (H+L), Peroxidase conjugated at
 1/10000 dilution. Predicted band size : 23 kDa
 Blocking/Dilution buffer: 5% NFDm/TBST.

Please note: All products are 'FOR RESEARCH USE ONLY. NOT FOR USE IN DIAGNOSTIC OR THERAPEUTIC PROCEDURES'.