

RHBG Antibody (C-term)

Affinity Purified Rabbit Polyclonal Antibody (Pab)

Catalog # AP9979a

Product Information

Application	WB, IHC-P, FC, E
Primary Accession	Q9H310
Reactivity	Human
Host	Rabbit
Clonality	Polyclonal
Isotype	Rabbit IgG
Clone Names	RB24663
Calculated MW	49481
Antigen Region	423-450

Additional Information

Gene ID	57127
Other Names	Ammonium transporter Rh type B, Rhesus blood group family type B glycoprotein, Rh family type B glycoprotein, Rh type B glycoprotein, RHBG
Target/Specificity	This RHBG antibody is generated from rabbits immunized with a KLH conjugated synthetic peptide between 423-450 amino acids from the C-terminal region of human RHBG.
Dilution	WB~~1:1000 IHC-P~~1:100~500 FC~~1:10~50 E~~Use at an assay dependent concentration.
Format	Purified polyclonal antibody supplied in PBS with 0.09% (W/V) sodium azide. This antibody is purified through a protein A column, followed by peptide affinity purification.
Storage	Maintain refrigerated at 2-8°C for up to 2 weeks. For long term storage store at -20°C in small aliquots to prevent freeze-thaw cycles.
Precautions	RHBG Antibody (C-term) is for research use only and not for use in diagnostic or therapeutic procedures.

Protein Information

Name	RHBG (HGNC:14572)
Function	Ammonium transporter involved in the maintenance of acid-base homeostasis. Transports ammonium and its related derivative methylammonium across the basolateral plasma membrane of epithelial cells

likely contributing to renal transepithelial ammonia transport and ammonia metabolism. May transport either NH_4^+ or NH_3 ammonia species predominantly mediating an electrogenic NH_4^+ transport (PubMed:[15284342](#), PubMed:[15929723](#), PubMed:[24077989](#)). May act as a CO_2 channel providing for renal acid secretion (PubMed:[24077989](#)).

Cellular Location

Cell membrane; Multi-pass membrane protein. Basolateral cell membrane; Multi-pass membrane protein

Tissue Location

Specifically expressed in kidney. Also detected in liver and ovary.

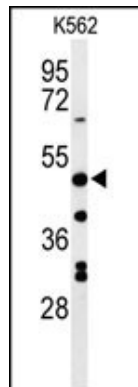
Background

RHBG encodes one of two non-erythroid members of the Rhesus (Rh) protein family. Non-erythroid Rh protein family members are mainly expressed in the kidney and belong to the methylammonium-ammonium permease/ammonia transporters superfamily. All Rh family proteins are predicted to be transmembrane proteins with 12 membrane spanning domains and intracytoplasmic N- and C-termini.

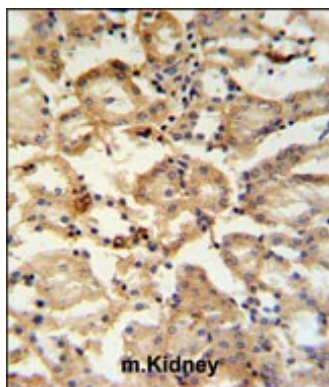
References

Han, K.H., et al. Am. J. Physiol. Lung Cell Mol. Physiol. 297 (1), L153-L163 (2009)
Brown, A.C., et al. Am. J. Physiol. Renal Physiol. 296 (6), F1279-F1290 (2009)
Sohet, F., et al. J. Biol. Chem. 283(39):26557-26567(2008)

Images

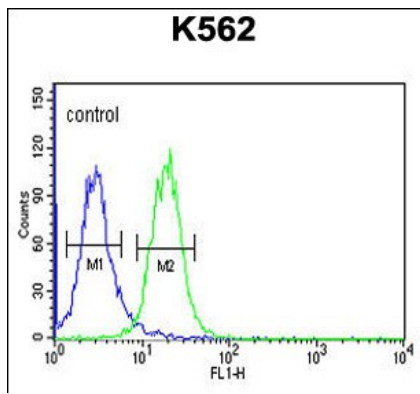


Western blot analysis of RHBG Antibody (C-term) (Cat. #AP9979a) in K562 cell line lysates (35ug/lane). RHBG (arrow) was detected using the purified Pab.



RHBG Antibody (C-term) (Cat. #AP9979a) IHC analysis in formalin fixed and paraffin embedded mouse kidney tissue followed by peroxidase conjugation of the secondary antibody and DAB staining. This data demonstrates the use of the RHBG Antibody (C-term) for immunohistochemistry. Clinical relevance has not been evaluated.

RHBG Antibody (C-term) (Cat. #AP9979a) flow cytometric analysis of K562 cells (right histogram) compared to a negative control cell (left histogram). FITC-conjugated goat-anti-rabbit secondary antibodies were used for the



analysis.

Please note: All products are 'FOR RESEARCH USE ONLY. NOT FOR USE IN DIAGNOSTIC OR THERAPEUTIC PROCEDURES'.