

IMP2L Antibody (Center)

Affinity Purified Rabbit Polyclonal Antibody (Pab)

Catalog # AP9993a

Product Information

Application	WB, IHC-P, FC, E
Primary Accession	Q96T52
Other Accession	Q8BPT6
Reactivity	Human
Predicted	Mouse
Host	Rabbit
Clonality	Polyclonal
Isotype	Rabbit IgG
Clone Names	RB24741
Calculated MW	19718
Antigen Region	81-109

Additional Information

Gene ID	83943
Other Names	Mitochondrial inner membrane protease subunit 2, 3421-, IMP2-like protein, IMMP2L
Target/Specificity	This IMP2L antibody is generated from rabbits immunized with a KLH conjugated synthetic peptide between 81-109 amino acids from the Central region of human IMP2L.
Dilution	WB~~1:1000 IHC-P~~1:100~500 FC~~1:10~50 E~~Use at an assay dependent concentration.
Format	Purified polyclonal antibody supplied in PBS with 0.09% (W/V) sodium azide. This antibody is purified through a protein A column, followed by peptide affinity purification.
Storage	Maintain refrigerated at 2-8°C for up to 2 weeks. For long term storage store at -20°C in small aliquots to prevent freeze-thaw cycles.
Precautions	IMP2L Antibody (Center) is for research use only and not for use in diagnostic or therapeutic procedures.

Protein Information

Name	IMMP2L
Function	Catalyzes the removal of transit peptides required for the targeting of

proteins from the mitochondrial matrix, across the inner membrane, into the inter-membrane space. Known to process the nuclear encoded protein DIABLO.

Cellular Location	Mitochondrion inner membrane; Single-pass membrane protein
Tissue Location	Expressed in all tissues tested except adult liver and lung.

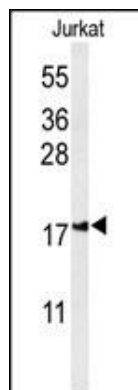
Background

IMP2L complex generates mature, active proteins in the mitochondrial intermembrane space by proteolytically removing the mitochondrial targeting presequence of nuclear-encoded proteins. IMP1 (IMMP1L; MIM 612323) and IMP2 are the catalytic subunits of the IMP complex.

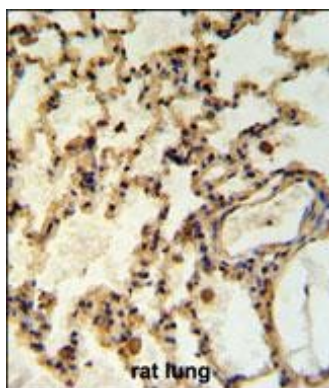
References

Need, A.C., et al. Hum. Mol. Genet. 18(23):4650-4661(2009)
Trynka, G., et al. Gut 58(8):1078-1083(2009)
de Krom, M., et al. Biol. Psychiatry 65(7):625-630(2009)

Images

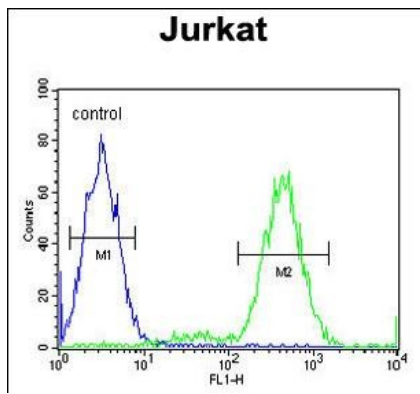


Western blot analysis of IMP2L Antibody (Center) (Cat. #AP9993a) in Jurkat cell line lysates (35ug/lane). IMP2L (arrow) was detected using the purified Pab.



IMP2L Antibody (Center) (Cat. #AP9993a) IHC analysis in formalin fixed and paraffin embedded rat lung tissue followed by peroxidase conjugation of the secondary antibody and DAB staining. This data demonstrates the use of the IMP2L Antibody (Center) for immunohistochemistry. Clinical relevance has not been evaluated.

IMP2L Antibody (Center) (Cat. #AP9993a) flow cytometric analysis of Jurkat cells (right histogram) compared to a negative control cell (left histogram). FITC-conjugated goat-anti-rabbit secondary antibodies were used for the analysis.



Please note: All products are 'FOR RESEARCH USE ONLY. NOT FOR USE IN DIAGNOSTIC OR THERAPEUTIC PROCEDURES'.