

# Anti-Endoglin / CD105 Reference Antibody (carotuximab-MMAE)

Recombinant Antibody  
Catalog # APR10001

## Product Information

---

Application	FC, Kinetics, Animal Model
Primary Accession	<a href="#">P17813</a>
Reactivity	Human
Clonality	Monoclonal
Isotype	IgG1
Calculated MW	70578

## Additional Information

---

Target/Specificity	Endoglin / CD105
Endotoxin Conjugation	MMAE
Expression system	CHO Cell
Format	Purified monoclonal antibody supplied in PBS, pH6.0, without preservative. This antibody is purified through a protein A column.

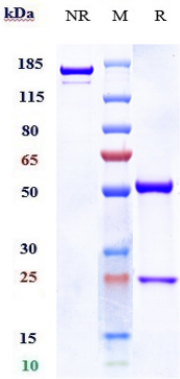
## Protein Information

---

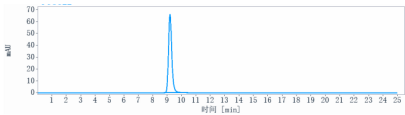
Name	ENG
Synonyms	END
Function	Vascular endothelium glycoprotein that plays an important role in the regulation of angiogenesis (PubMed: <a href="#">21737454</a> , PubMed: <a href="#">23300529</a> ). Required for normal structure and integrity of adult vasculature (PubMed: <a href="#">7894484</a> ). Regulates the migration of vascular endothelial cells (PubMed: <a href="#">17540773</a> ). Required for normal extraembryonic angiogenesis and for embryonic heart development (By similarity). May regulate endothelial cell shape changes in response to blood flow, which drive vascular remodeling and establishment of normal vascular morphology during angiogenesis (By similarity). May play a critical role in the binding of endothelial cells to integrins and/or other RGD receptors (PubMed: <a href="#">1692830</a> ). Acts as a TGF-beta coreceptor and is involved in the TGF-beta/BMP signaling cascade that ultimately leads to the activation of SMAD transcription factors (PubMed: <a href="#">21737454</a> , PubMed: <a href="#">22347366</a> , PubMed: <a href="#">23300529</a> , PubMed: <a href="#">8370410</a> ). Required for GDF2/BMP9 signaling through SMAD1 in endothelial cells and modulates TGFB1 signaling through SMAD3 (PubMed: <a href="#">21737454</a> , PubMed: <a href="#">22347366</a> , PubMed: <a href="#">23300529</a> ).

Cellular Location	Cell membrane; Single-pass type I membrane protein
Tissue Location	Detected on umbilical vein endothelial cells (PubMed:10625079). Detected in placenta (at protein level) (PubMed:1692830). Detected on endothelial cells (PubMed:1692830)

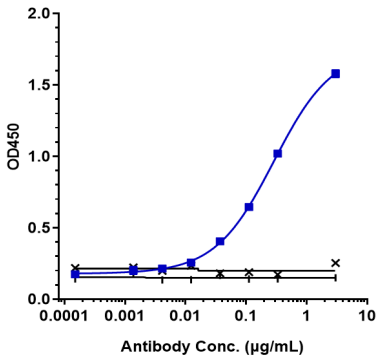
Images



Anti-Endoglin / CD105 Reference Antibody (carotuximab-MMAE) on SDS-PAGE under reducing (R) condition. The gel was stained with Coomassie Blue. The purity of the protein is greater than 90%



The purity of Anti-Endoglin / CD105 Reference Antibody (carotuximab-MMAE) is more than 95% ,determined by SEC-HPLC.



Immobilized human CD105 His at 2 µg/mL can bind Anti-Endoglin / CD105 Reference Antibody (carotuximab-MMAE),EC50=0.2864 µg/mL.

Please note: All products are 'FOR RESEARCH USE ONLY. NOT FOR USE IN DIAGNOSTIC OR THERAPEUTIC PROCEDURES'.