

# Anti-Spike RBD Reference Antibody (Sotrovimab)

Recombinant Antibody  
Catalog # APR10002

## Product Information

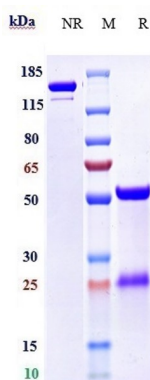
<b>Application</b>	FC, Kinetics, Animal Model
<b>Primary Accession</b>	<a href="#">NA</a>
<b>Reactivity</b>	Influenza A virus
<b>Clonality</b>	Monoclonal
<b>Isotype</b>	IgG1
<b>Calculated MW</b>	146 KDa

## Additional Information

<b>Target/Specificity</b>	Spike RBD
<b>Endotoxin</b>	
<b>Conjugation</b>	Unconjugated
<b>Expression system</b>	CHO Cell
<b>Format</b>	Purified monoclonal antibody supplied in PBS, pH6.0, without preservative. This antibody is purified through a protein A column.

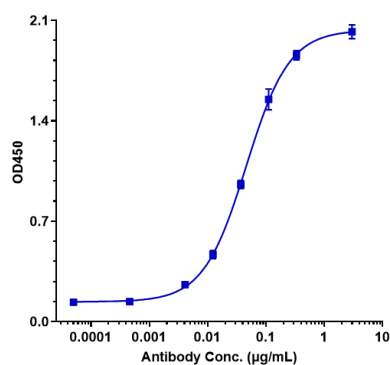
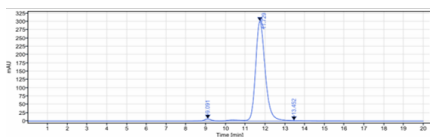
## Protein Information

## Images



Anti-Spike RBD Reference Antibody (Sotrovimab) on SDS-PAGE under reducing (R) condition. The gel was stained with Coomassie Blue. The purity of the protein is greater than 95%

The purity of Anti-Spike RBD Reference Antibody (Sotrovimab) is more than 96.6%, determined by SEC-HPLC.



Immobilized 2019nCoV RBD His at 2 µg/mL can bind  
Anti-Spike RBD Reference Antibody  
(Sotrovimab), EC50=0.04601 µg/mL.

Please note: All products are 'FOR RESEARCH USE ONLY. NOT FOR USE IN DIAGNOSTIC OR THERAPEUTIC PROCEDURES'.