

# Anti-CALCRL / CGRPR Reference Antibody (erenumab)

Recombinant Antibody

Catalog # APR10013

## Product Information

---

<b>Application</b>	FC, Kinetics, Animal Model
<b>Primary Accession</b>	<a href="#">Q16602</a>
<b>Reactivity</b>	Human
<b>Clonality</b>	Monoclonal
<b>Isotype</b>	IgG2SA
<b>Calculated MW</b>	52979

## Additional Information

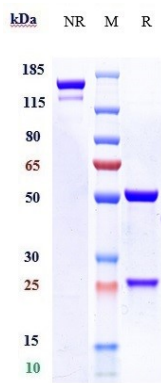
---

<b>Target/Specificity</b>	CALCRL / CGRPR
<b>Endotoxin Conjugation</b>	Unconjugated
<b>Expression system</b>	CHO Cell
<b>Format</b>	Purified monoclonal antibody supplied in PBS, pH6.0, without preservative. This antibody is purified through a protein A column.

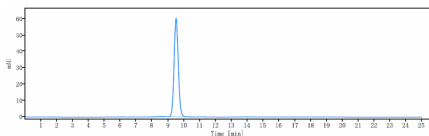
## Protein Information

---

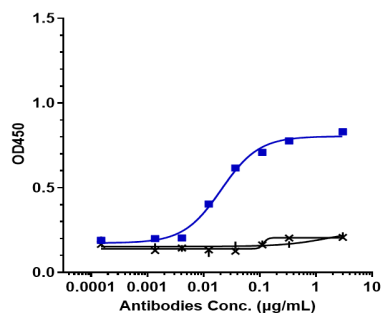
<b>Name</b>	CALCRL ( <a href="#">HGNC:16709</a> )
<b>Synonyms</b>	CGRPR
<b>Function</b>	G protein-coupled receptor which specificity is determined by its interaction with receptor-activity-modifying proteins (RAMPs) (PubMed: <a href="#">32296767</a> , PubMed: <a href="#">33602864</a> , PubMed: <a href="#">8626685</a> ). Together with RAMP1, form the receptor complex for calcitonin-gene-related peptides CALCA/CGRP1 and CALCB/CGRP2 (PubMed: <a href="#">33602864</a> ). Together with RAMP2 or RAMP3, function as receptor complexes for adrenomedullin (ADM and ADM2) (PubMed: <a href="#">32296767</a> , PubMed: <a href="#">9620797</a> ). Ligand binding causes a conformation change that triggers signaling via guanine nucleotide-binding proteins (G proteins) and modulates the activity of downstream effectors. Activates cAMP-dependent pathway (PubMed: <a href="#">32296767</a> , PubMed: <a href="#">8626685</a> ).
<b>Cellular Location</b>	Cell membrane; Multi-pass membrane protein
<b>Tissue Location</b>	Predominantly expressed in the lung and heart.



Anti-CALCRL / CGRPR Reference Antibody (erenumab) on SDS-PAGE under reducing (R) condition. The gel was stained with Coomassie Blue. The purity of the protein is greater than 95%



The purity of Anti-CALCRL / CGRPR Reference Antibody (erenumab) is more than 99.43% ,determined by SEC-HPLC.



Immobilized human CGRPR VLP Protein at 16 µg/mL can bind Anti-CALCRL / CGRPR Reference Antibody (erenumab),EC50=0.0206 µg/mL.

Please note: All products are 'FOR RESEARCH USE ONLY. NOT FOR USE IN DIAGNOSTIC OR THERAPEUTIC PROCEDURES'.