

Anti-CLDN6 Reference Antibody (DS-9606a)

Recombinant Antibody
Catalog # APR10015

Product Information

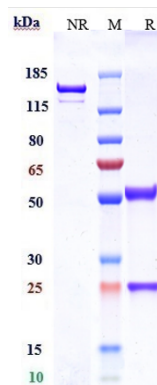
| | |
|--------------------------|----------------------------|
| Application | FC, Kinetics, Animal Model |
| Primary Accession | P56747 |
| Reactivity | Human |
| Clonality | Monoclonal |
| Isotype | IgG1 |
| Calculated MW | 145 kDa |

Additional Information

| | |
|----------------------------------|--|
| Target/Specificity | CLDN6 |
| Endotoxin Conjugation | Unconjugated |
| Expression system | CHO Cell |
| Format | Purified monoclonal antibody supplied in PBS, pH6.0, without preservative. This antibody is purified through a protein A column. |

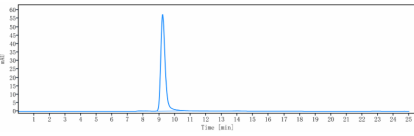
Protein Information

Images

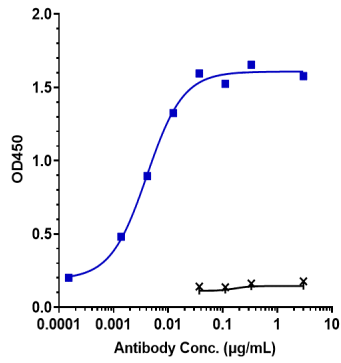


Anti-CLDN6 Reference Antibody (DS-9606a) on SDS-PAGE under reducing (R) condition. The gel was stained with Coomassie Blue. The purity of the protein is greater than 95%

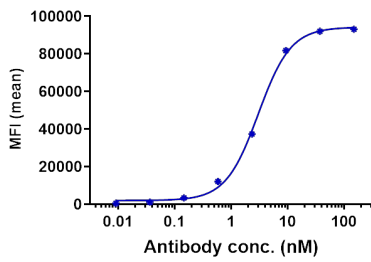
The purity of Anti-CLDN6 Reference Antibody (DS-9606a) is more than 99.37% ,determined by SEC-HPLC.



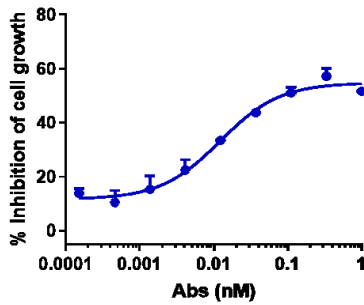
Immobilized human CLDN6 VLP Protein at 2 µg/mL can bind Anti-CLDN6 Reference Antibody (DS-9606a), EC50=0.00407 µg/mL.



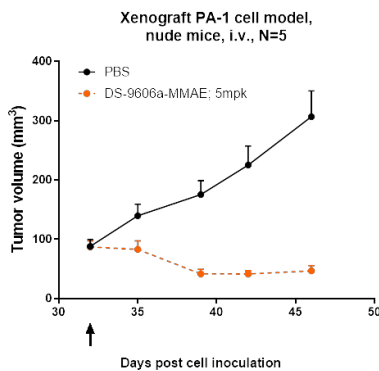
Human CLDN6 CHO cells were stained with Anti-CLDN6 Reference Antibody (DS-9606a) and negative control protein respectively, washed and then followed by PE and analyzed with FACS, EC64=3.036 nM



DS-9606a by huCLDN6-HEK293 increased with the increase of antibody concentration, and the Internalization Rate (%) reached 60% at antibody concentration of 1 nM.



DS-9606a inhibited the tumor growth of PA-1 on Balb/c nude mice. The result showed significant anti-tumor effects, with a tumor inhibition rate (TGI) of 84.7% at 5 mpk at D46.



Please note: All products are 'FOR RESEARCH USE ONLY. NOT FOR USE IN DIAGNOSTIC OR THERAPEUTIC PROCEDURES'.