

Anti-LAG3 / CD223 Reference Antibody (relatlimab)

Recombinant Antibody

Catalog # APR10029

Product Information

Application	FC, Kinetics, Animal Model
Primary Accession	P18627
Reactivity	Human
Clonality	Monoclonal
Isotype	IgG4SP
Calculated MW	57449

Additional Information

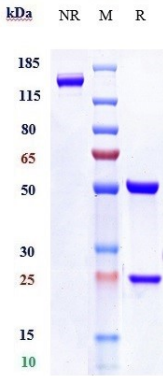
Target/Specificity	LAG3 / CD223
Endotoxin	
Conjugation	Unconjugated
Expression system	CHO Cell
Format	Purified monoclonal antibody supplied in PBS, pH6.0, without preservative. This antibody is purified through a protein A column.

Protein Information

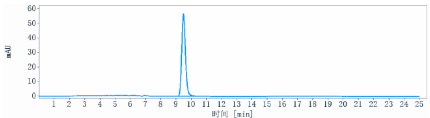
Name	LAG3 (HGNC:6476)
Synonyms	FDC
Function	Lymphocyte activation gene 3 protein: Inhibitory receptor on antigen activated T-cells (PubMed: 20421648 , PubMed: 7805750 , PubMed: 8647185). Delivers inhibitory signals upon binding to ligands, such as FGL1 (By similarity). FGL1 constitutes a major ligand of LAG3 and is responsible for LAG3 T-cell inhibitory function (By similarity). Following TCR engagement, LAG3 associates with CD3-TCR in the immunological synapse and directly inhibits T-cell activation (By similarity). May inhibit antigen-specific T-cell activation in synergy with PDCD1/PD-1, possibly by acting as a coreceptor for PDCD1/PD-1 (By similarity). Negatively regulates the proliferation, activation, effector function and homeostasis of both CD8(+) and CD4(+) T-cells (PubMed: 20421648 , PubMed: 7805750 , PubMed: 8647185). Also mediates immune tolerance: constitutively expressed on a subset of regulatory T-cells (Tregs) and contributes to their suppressive function (By similarity). Also acts as a negative regulator of plasmacytoid dendritic cell (pDCs) activation (By similarity). Binds MHC class II (MHC-II); the precise role of MHC-II-binding is however unclear (PubMed: 8647185).

Cellular Location	[Lymphocyte activation gene 3 protein]: Cell membrane; Single-pass type I membrane protein
Tissue Location	Primarily expressed in activated T-cells and a subset of natural killer (NK) cells.

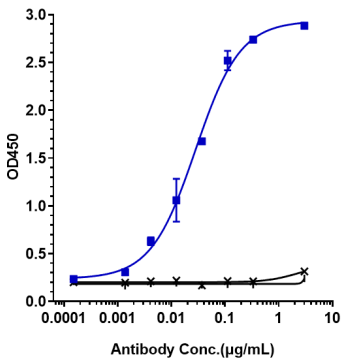
Images



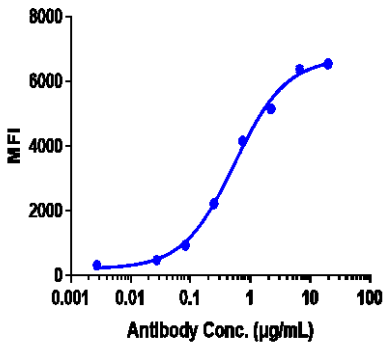
Anti-LAG3 / CD223 Reference Antibody (relatlimab) on SDS-PAGE under reducing (R) condition. The gel was stained with Coomassie Blue. The purity of the protein is greater than 95%



The purity of Anti-LAG3 / CD223 Reference Antibody (relatlimab)is more than 100% ,determined by SEC-HPLC.

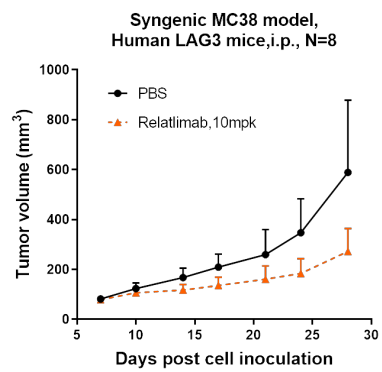


Immobilized human LAG3 His at 2 µg/mL can bind Anti-LAG3 / CD223 Reference Antibody (relatlimab),EC50=0.02812 µg/mL.



Human LAG3 CHO cells were stained with Anti-LAG3 / CD223 Reference Antibody (relatlimab) and negative control protein respectively, washed and then followed by PE and analyzed with FACS, EC78=0.5464 ug/mL

Relatlimab inhibited the tumor growth of MC38 on Human LAG3 mice. The result showed significant anti-tumor effects, with an tumor inhibition rate (TGI) of 53.8% at 10 mpk at D28.



Please note: All products are 'FOR RESEARCH USE ONLY. NOT FOR USE IN DIAGNOSTIC OR THERAPEUTIC PROCEDURES'.