

Anti-ERBB1 / EGFR / HER1 Reference Antibody (Chinese Mil.Med.Sci. patent anti-EGFR)

Recombinant Antibody
Catalog # APR10035

Product Information

| | |
|-------------------|----------------------------|
| Application | FC, Kinetics, Animal Model |
| Primary Accession | P00533 |
| Reactivity | Human |
| Clonality | Monoclonal |
| Isotype | IgG1 |
| Calculated MW | 134277 |

Additional Information

| | |
|--------------------------|--|
| Target/Specificity | ERBB1 / EGFR / HER1 |
| Endotoxin Conjugation | Unconjugated |
| Expression system | CHO Cell |
| Format | Purified monoclonal antibody supplied in PBS, pH6.0, without preservative. This antibody is purified through a protein A column. |

Protein Information

| | |
|----------|--|
| Name | EGFR (HGNC:3236) |
| Synonyms | ERBB, ERBB1, HER1 |
| Function | Receptor tyrosine kinase binding ligands of the EGF family and activating several signaling cascades to convert extracellular cues into appropriate cellular responses (PubMed: 10805725 , PubMed: 27153536 , PubMed: 2790960 , PubMed: 35538033). Known ligands include EGF, TGFA/TGF- alpha, AREG, epigen/EPGN, BTC/betacellulin, epiregulin/EREG and HBEGF/heparin-binding EGF (PubMed: 12297049 , PubMed: 15611079 , PubMed: 17909029 , PubMed: 20837704 , PubMed: 27153536 , PubMed: 2790960 , PubMed: 7679104 , PubMed: 8144591 , PubMed: 9419975). Ligand binding triggers receptor homo- and/or heterodimerization and autophosphorylation on key cytoplasmic residues. The phosphorylated receptor recruits adapter proteins like GRB2 which in turn activates complex downstream signaling cascades. Activates at least 4 major downstream signaling cascades including the RAS-RAF-MEK-ERK, PI3 kinase-AKT, PLCgamma-PKC and STATs modules (PubMed: 27153536). May also activate the NF-kappa-B signaling cascade (PubMed: 11116146). Also directly phosphorylates other proteins like RGS16, activating its GTPase |

activity and probably coupling the EGF receptor signaling to the G protein-coupled receptor signaling (PubMed:[11602604](#)). Also phosphorylates MUC1 and increases its interaction with SRC and CTNNB1/beta-catenin (PubMed:[11483589](#)). Positively regulates cell migration via interaction with CCDC88A/GIV which retains EGFR at the cell membrane following ligand stimulation, promoting EGFR signaling which triggers cell migration (PubMed:[20462955](#)). Plays a role in enhancing learning and memory performance (By similarity). Plays a role in mammalian pain signaling (long-lasting hypersensitivity) (By similarity).

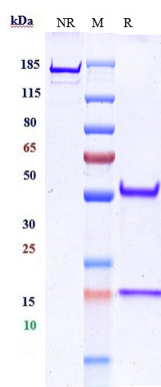
Cellular Location

Cell membrane; Single-pass type I membrane protein. Endoplasmic reticulum membrane; Single-pass type I membrane protein Golgi apparatus membrane; Single-pass type I membrane protein. Nucleus membrane; Single-pass type I membrane protein. Endosome. Endosome membrane. Nucleus. Note=In response to EGF, translocated from the cell membrane to the nucleus via Golgi and ER (PubMed:17909029, PubMed:20674546). Endocytosed upon activation by ligand (PubMed:17182860, PubMed:17909029, PubMed:27153536, PubMed:2790960). Colocalized with GPER1 in the nucleus of estrogen agonist-induced cancer-associated fibroblasts (CAF) (PubMed:20551055)

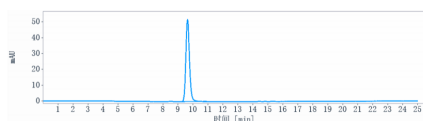
Tissue Location

Ubiquitously expressed. Isoform 2 is also expressed in ovarian cancers.

Images



Anti-ERBB1 / EGFR / HER1 Reference Antibody (Chinese Mil.Med.Sci. patent anti-EGFR) on SDS-PAGE under reducing (R) condition. The gel was stained with Coomassie Blue. The purity of the protein is greater than 95%



The purity of Anti-ERBB1 / EGFR / HER1 Reference Antibody (Chinese Mil.Med.Sci. patent anti-EGFR) is more than 100% ,determined by SEC-HPLC.

Image not found : 202311/AP90034-4.jpg

Human EGFR CHO-K cells were stained with Anti-ERBB1 / EGFR / HER1 Reference Antibody (Chinese Mil.Med.Sci. patent anti-EGFR) and negative control protein respectively, washed and then followed by and analyzed with FACS, EC84=N/A

Please note: All products are 'FOR RESEARCH USE ONLY. NOT FOR USE IN DIAGNOSTIC OR THERAPEUTIC PROCEDURES'.