

Anti-ERBB3 / HER3 Reference Antibody (patritumab)

Recombinant Antibody

Catalog # APR10047

Product Information

Application	FC, Kinetics, Animal Model
Primary Accession	P21860
Reactivity	Human, Rat
Clonality	Monoclonal
Isotype	IgG1
Calculated MW	148098

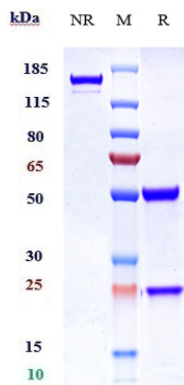
Additional Information

Target/Specificity	ERBB3 / HER3
Endotoxin	
Conjugation	Unconjugated
Expression system	CHO Cell
Format	Purified monoclonal antibody supplied in PBS, pH6.0, without preservative. This antibody is purified through a protein A column.

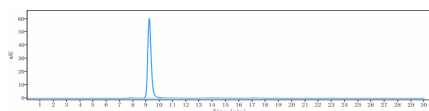
Protein Information

Name	ERBB3
Synonyms	HER3
Function	Tyrosine-protein kinase that plays an essential role as cell surface receptor for neuregulins. Binds to neuregulin-1 (NRG1) and is activated by it; ligand-binding increases phosphorylation on tyrosine residues and promotes its association with the p85 subunit of phosphatidylinositol 3-kinase (PubMed: 20682778). May also be activated by CSPG5 (PubMed: 15358134). Involved in the regulation of myeloid cell differentiation (PubMed: 27416908).
Cellular Location	[Isoform 1]: Cell membrane; Single-pass type I membrane protein
Tissue Location	Epithelial tissues and brain.

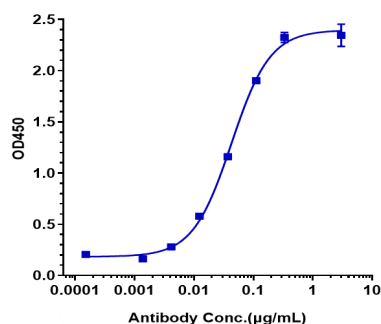
Images



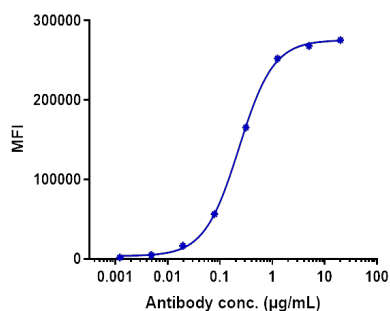
SDS-PAGE under reducing (R) condition. The gel was stained with Coomassie Blue. The purity of the protein is greater than 95%



The purity of Anti-ERBB3 / HER3 Reference Antibody (patritumab) is more than 99.19%, determined by SEC-HPLC.



Immobilized human HER3 His at 2 µg/mL can bind Anti-ERBB3 / HER3 Reference Antibody (patritumab), $EC_{50}=0.04264 \mu\text{g/mL}$



Human HER3 HEK293 cells were stained with Anti-ERBB3 / HER3 Reference Antibody (patritumab) and negative control protein respectively, washed and then followed by PE and analyzed with FACS, $EC_{99}=0.2297 \mu\text{g/mL}$

Please note: All products are 'FOR RESEARCH USE ONLY. NOT FOR USE IN DIAGNOSTIC OR THERAPEUTIC PROCEDURES'.