

# Anti-HGF / SF Reference Antibody (rilotumumab)

Recombinant Antibody  
Catalog # APR10049

## Product Information

---

Application	FC, Kinetics, Animal Model
Primary Accession	<a href="#">P14210</a>
Reactivity	Human, Mouse
Clonality	Monoclonal
Isotype	IgG2SA
Calculated MW	83134

## Additional Information

---

Target/Specificity	HGF / SF
Endotoxin Conjugation	Unconjugated
Expression system	CHO Cell
Format	Purified monoclonal antibody supplied in PBS, pH6.0, without preservative. This antibody is purified through a protein A column.

## Protein Information

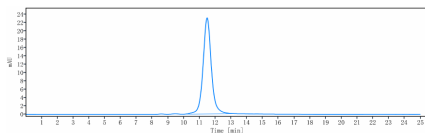
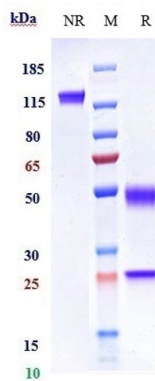
---

Name	HGF
Synonyms	HPTA
Function	Potent mitogen for mature parenchymal hepatocyte cells, seems to be a hepatotrophic factor, and acts as a growth factor for a broad spectrum of tissues and cell types (PubMed: <a href="#">20624990</a> ). Activating ligand for the receptor tyrosine kinase MET by binding to it and promoting its dimerization (PubMed: <a href="#">15167892</a> , PubMed: <a href="#">20977675</a> ). Activates MAPK signaling following TMPRSS13 cleavage and activation (PubMed: <a href="#">20977675</a> ).

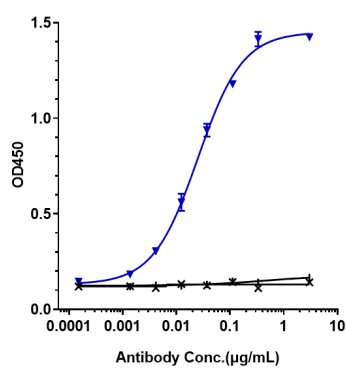
## Images

---

Anti-HGF / SF Reference Antibody (rilotumumab) on SDS-PAGE under reducing (R) condition. The gel was stained with Coomassie Blue. The purity of the protein is greater than 95%



The purity of Anti-HGF / SF Reference Antibody (rilotumumab) is more than 100% ,determined by SEC-HPLC.



Immobilized human HGF His at 2 µg/mL can bind Anti-HGF / SF Reference Antibody (rilotumumab), EC<sub>50</sub>=0.02507 µg/mL

Please note: All products are 'FOR RESEARCH USE ONLY. NOT FOR USE IN DIAGNOSTIC OR THERAPEUTIC PROCEDURES'.