

Anti-MUC1 Reference Antibody (clivatuzumab)

Recombinant Antibody

Catalog # APR10055

Product Information

Application	FC, Kinetics, Animal Model
Primary Accession	P15941
Reactivity	Human
Clonality	Monoclonal
Isotype	IgG1
Calculated MW	122102

Additional Information

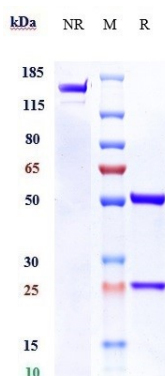
Target/Specificity	MUC1
Endotoxin	
Conjugation	Unconjugated
Expression system	CHO Cell
Format	Purified monoclonal antibody supplied in PBS, pH6.0, without preservative. This antibody is purified through a protein A column.

Protein Information

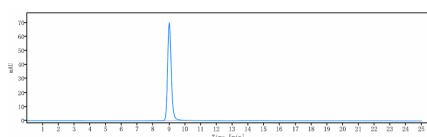
Name	MUC1
Synonyms	PUM
Function	The alpha subunit has cell adhesive properties. Can act both as an adhesion and an anti-adhesion protein. May provide a protective layer on epithelial cells against bacterial and enzyme attack.
Cellular Location	Apical cell membrane; Single-pass type I membrane protein. Note=Exclusively located in the apical domain of the plasma membrane of highly polarized epithelial cells After endocytosis, internalized and recycled to the cell membrane Located to microvilli and to the tips of long filopodial protusions [Isoform Y]: Secreted. [Mucin-1 subunit beta]: Cell membrane. Cytoplasm. Nucleus. Note=On EGF and PDGFRB stimulation, transported to the nucleus through interaction with CTNNB1, a process which is stimulated by phosphorylation. On HRG stimulation, colocalizes with JUP/gamma-catenin at the nucleus
Tissue Location	Expressed on the apical surface of epithelial cells, especially of airway passages, breast and uterus. Also expressed in activated and unactivated T-cells. Overexpressed in epithelial tumors, such as breast or ovarian cancer

and also in non-epithelial tumor cells. Isoform Y is expressed in tumor cells only

Images



Anti-MUC1 Reference Antibody (clivatuzumab) on SDS-PAGE under reducing (R) condition. The gel was stained with Coomassie Blue. The purity of the protein is greater than 95%



The purity of Anti-MUC1 Reference Antibody (clivatuzumab) is more than 100%, determined by SEC-HPLC.

Image not found : 202311/AP90054-3.jpg

Immobilized human MUC1(966 1155) His at 2 µg/mL can bind Anti-MUC1 Reference Antibody (clivatuzumab), EC₅₀=0.007288 µg/mL

Please note: All products are 'FOR RESEARCH USE ONLY. NOT FOR USE IN DIAGNOSTIC OR THERAPEUTIC PROCEDURES'.