

# Anti-DLK1 Reference Antibody (LIV-1205)

Recombinant Antibody  
Catalog # APR10063

## Product Information

---

<b>Application</b>	FC, Kinetics, Animal Model
<b>Primary Accession</b>	<a href="#">P80370</a>
<b>Reactivity</b>	Human, Mouse
<b>Clonality</b>	Monoclonal
<b>Isotype</b>	IgG1
<b>Calculated MW</b>	41300

## Additional Information

---

<b>Target/Specificity</b>	DLK1
<b>Endotoxin Conjugation</b>	Unconjugated
<b>Expression system</b>	CHO Cell
<b>Format</b>	Purified monoclonal antibody supplied in PBS, pH6.0, without preservative. This antibody is purified through a protein A column.

## Protein Information

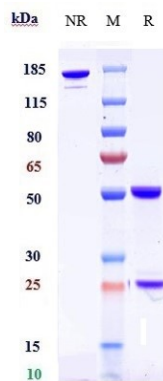
---

<b>Name</b>	DLK1
<b>Synonyms</b>	DLK
<b>Function</b>	May have a role in neuroendocrine differentiation.
<b>Cellular Location</b>	Membrane; Single-pass type I membrane protein. Cytoplasm {ECO:0000250 UniProtKB:O70534}
<b>Tissue Location</b>	Found within the stromal cells in close contact to the vascular structure of placental villi, yolk sac, fetal liver, adrenal cortex and pancreas and in the beta cells of the islets of Langerhans in the adult pancreas. Found also in some forms of neuroendocrine lung tumor tissue

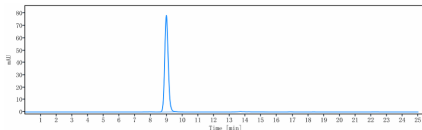
## Images

---

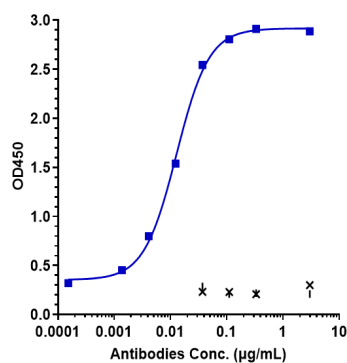
Anti-DLK1 Reference Antibody (LIV-1205) on SDS-PAGE under reducing (R) condition. The gel was stained with



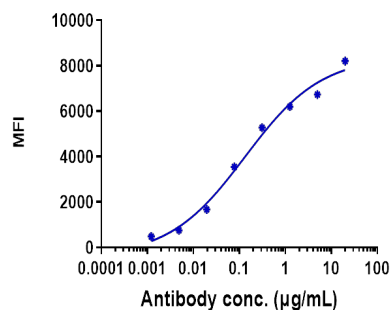
Coomassie Blue. The purity of the protein is greater than 95%



The purity of Anti-DLK1 Reference Antibody (LIV-1205) is more than 95%, determined by SEC-HPLC.



Immobilized human DLK1.1 His at 2 µg/mL can bind Anti-DLK1 Reference Antibody (LIV-1205),  $EC_{50}=0.01281$  µg/mL



Human DLK1 HEK293 cells were stained with Anti-DLK1 Reference Antibody (LIV-1205) and negative control protein respectively, washed and then followed by PE and analyzed with FACS,  $EC_{115}=0.1334$  µg/mL

Please note: All products are 'FOR RESEARCH USE ONLY. NOT FOR USE IN DIAGNOSTIC OR THERAPEUTIC PROCEDURES'.