

Anti-SIRPg / CD172g Reference Antibody (KWAR23)

Recombinant Antibody

Catalog # APR10072

Product Information

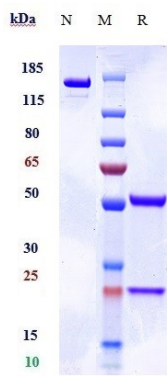
Application	FC, Kinetics, Animal Model
Primary Accession	Q9P1W8
Reactivity	Human, Mouse
Clonality	Monoclonal
Isotype	IgG4SP
Calculated MW	42498

Additional Information

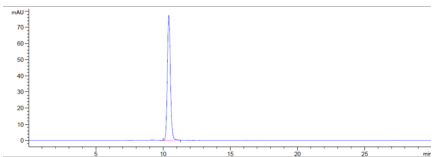
Target/Specificity	SIRPg / CD172g
Endotoxin Conjugation	Unconjugated
Expression system	CHO Cell
Format	Purified monoclonal antibody supplied in PBS, pH6.0, without preservative. This antibody is purified through a protein A column.

Protein Information

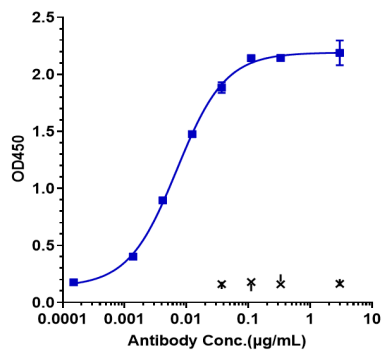
Name	SIRPG
Synonyms	SIRPB2
Function	Probable immunoglobulin-like cell surface receptor. On binding with CD47, mediates cell-cell adhesion. Engagement on T-cells by CD47 on antigen-presenting cells results in enhanced antigen- specific T-cell proliferation and costimulates T-cell activation.
Cellular Location	Membrane; Single- pass type I membrane protein
Tissue Location	Detected in liver, and at very low levels in brain, heart, lung, pancreas, kidney, placenta and skeletal muscle. Expressed on CD4+ T-cells, CD8+ T-cells, CD56-bright natural killer (NK) cells, CD20+ cells, and all activated NK cells. Mainly present in the paracortical T-cell area of lymph nodes, with only sparse positive cells in the mantle and in the germinal center of B-cell follicles. In the thymus, primarily expressed in the medulla on mature T-lymphocytes that have undergone thymic selection.



Anti-SIRPg / CD172g Reference Antibody (KWAR23) on SDS-PAGE under reducing (R) condition. The gel was stained with Coomassie Blue. The purity of the protein is greater than 95%



The purity of Anti-SIRPg / CD172g Reference Antibody (KWAR23) is more than 100% ,determined by SEC-HPLC.



Immobilized human ALCAM His at 2 µg/mL can bind Anti-SIRPg / CD172g Reference Antibody (KWAR23),EC50=0.00698 µg/mL

Please note: All products are 'FOR RESEARCH USE ONLY. NOT FOR USE IN DIAGNOSTIC OR THERAPEUTIC PROCEDURES'.