

# Anti-CSF2Ra / GM-CSFRa / CD116 Reference Antibody (mavrilimumab)

Recombinant Antibody  
Catalog # APR10083

## Product Information

---

<b>Application</b>	FC, Kinetics, Animal Model
<b>Primary Accession</b>	<a href="#">P15509</a>
<b>Reactivity</b>	Human
<b>Clonality</b>	Monoclonal
<b>Isotype</b>	IgG4
<b>Calculated MW</b>	46207

## Additional Information

---

<b>Target/Specificity</b>	CSF2Ra / GM-CSFRa / CD116
<b>Endotoxin Conjugation</b>	Unconjugated
<b>Expression system</b>	CHO Cell
<b>Format</b>	Purified monoclonal antibody supplied in PBS, pH6.0, without preservative. This antibody is purified through a protein A column.

## Protein Information

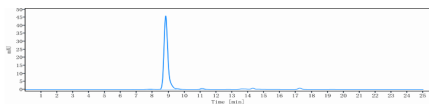
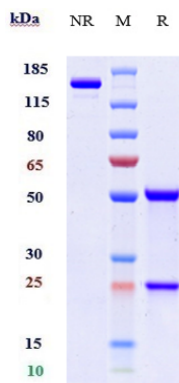
---

<b>Name</b>	CSF2RA
<b>Synonyms</b>	CSF2R, CSF2RY
<b>Function</b>	Low affinity receptor for granulocyte-macrophage colony- stimulating factor. Transduces a signal that results in the proliferation, differentiation, and functional activation of hematopoietic cells.
<b>Cellular Location</b>	Cell membrane; Single-pass type I membrane protein [Isoform 4]: Secreted.

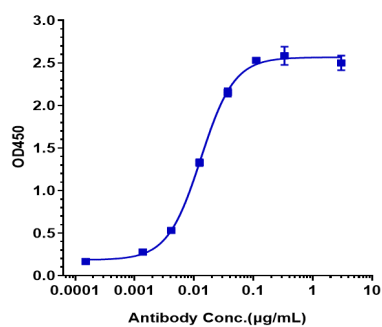
## Images

---

Anti-CSF2Ra / GM-CSFRa / CD116 Reference Antibody (mavrilimumab) on SDS-PAGE under reducing (R) condition. The gel was stained with Coomassie Blue. The purity of the protein is greater than 95%



The purity of Anti-CSF2Ra / GM-CSFRa / CD116 Reference Antibody (mavrilimumab) is more than 96.17%, determined by SEC-HPLC.



Immobilized human CD116 His at 2 µg/mL can bind Anti-CSF2Ra / GM-CSFRa / CD116 Reference Antibody (mavrilimumab),  $EC_{50}=0.01299$  µg/mL

Please note: All products are 'FOR RESEARCH USE ONLY. NOT FOR USE IN DIAGNOSTIC OR THERAPEUTIC PROCEDURES'.