

Anti-CEACAM5 / CEA / CD66e Reference Antibody (labetuzumab)

Recombinant Antibody
Catalog # APR10100

Product Information

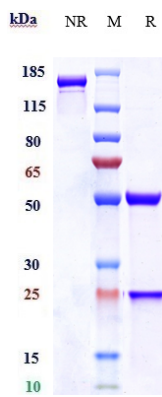
Application	FC, Kinetics, Animal Model
Primary Accession	P06731
Reactivity	Human, Mouse
Clonality	Monoclonal
Isotype	IgG1
Calculated MW	76796

Additional Information

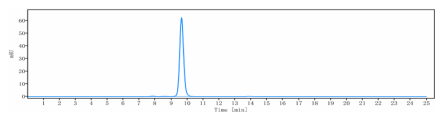
Target/Specificity	CEACAM5 / CEA / CD66e
Endotoxin Conjugation	Unconjugated
Expression system	CHO Cell
Format	Purified monoclonal antibody supplied in PBS, pH6.0, without preservative. This antibody is purified through a protein A column.

Protein Information

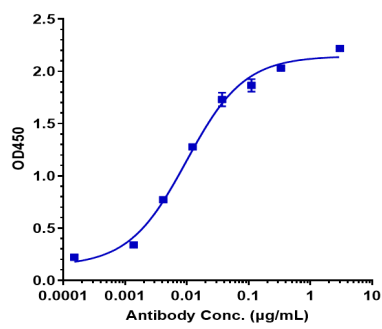
Name	CEACAM5 (HGNC:1817)
Function	Cell surface glycoprotein that plays a role in cell adhesion, intracellular signaling and tumor progression (PubMed: 10864933 , PubMed: 10910050 , PubMed: 2803308). Mediates homophilic and heterophilic cell adhesion with other carcinoembryonic antigen-related cell adhesion molecules, such as CEACAM6 (PubMed: 2803308). Plays a role as an oncogene by promoting tumor progression; induces resistance to anoikis of colorectal carcinoma cells (PubMed: 10910050).
Cellular Location	Cell membrane; Lipid-anchor, GPI-anchor. Apical cell membrane. Cell surface Note=Localized to the apical glycocalyx surface
Tissue Location	Expressed in columnar epithelial and goblet cells of the colon (at protein level) (PubMed:10436421). Found in adenocarcinomas of endodermally derived digestive system epithelium and fetal colon.



Anti-CEACAM5 / CEA / CD66e Reference Antibody (labetuzumab) on SDS-PAGE under reducing (R) condition. The gel was stained with Coomassie Blue. The purity of the protein is greater than 95%



The purity of Anti-CEACAM5 / CEA / CD66e Reference Antibody (labetuzumab) is more than 98.53% ,determined by SEC-HPLC.



Immobilized human CEACAM5 His Biotin at 2 µg/mL can bind Anti-CEACAM5 / CEA / CD66e Reference Antibody (labetuzumab),EC50=0.009815 µg/mL

Please note: All products are 'FOR RESEARCH USE ONLY. NOT FOR USE IN DIAGNOSTIC OR THERAPEUTIC PROCEDURES'.