

Anti-CEACAM6 / CD66c Reference Antibody (tinurilimab)

Recombinant Antibody

Catalog # APR10101

Product Information

Application	FC, Kinetics, Animal Model
Primary Accession	P40199
Reactivity	Human
Clonality	Monoclonal
Isotype	IgG2SA
Calculated MW	37237

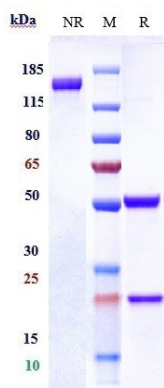
Additional Information

Target/Specificity	CEACAM6 / CD66c
Endotoxin	
Conjugation	Unconjugated
Expression system	CHO Cell
Format	Purified monoclonal antibody supplied in PBS, pH6.0, without preservative. This antibody is purified through a protein A column.

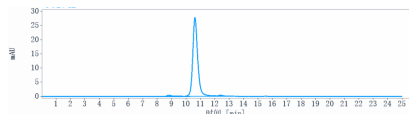
Protein Information

Name	CEACAM6 (HGNC:1818)
Function	Cell surface glycoprotein that plays a role in cell adhesion and tumor progression (PubMed: 10910050 , PubMed: 11590190 , PubMed: 1378450 , PubMed: 16204051 , PubMed: 2022629 , PubMed: 2803308 , PubMed: 8776764). Intercellular adhesion occurs in a calcium- and fibronectin-independent manner (PubMed: 16204051 , PubMed: 2022629). Mediates homophilic and heterophilic cell adhesion with other carcinoembryonic antigen-related cell adhesion molecules, such as CEACAM5 and CEACAM8 (PubMed: 11590190 , PubMed: 16204051 , PubMed: 2022629 , PubMed: 2803308 , PubMed: 8776764). Heterophilic interaction with CEACAM8 occurs in activated neutrophils (PubMed: 8776764). Plays a role in neutrophil adhesion to cytokine-activated endothelial cells (PubMed: 1378450). Plays a role in cell migration and cell adhesion to endothelial cells (PubMed: 16204051).
Cellular Location	Cell membrane; Lipid-anchor, GPI-anchor. Apical cell membrane. Cell surface. Note=Localized to the apical glycocalyx surface.
Tissue Location	Expressed in neutrophils (PubMed:1378450). Expressed in columnar epithelial and goblet cells of the colon (PubMed:10436421). Expressed in numerous tumor cell lines (at protein level) (PubMed:16204051).

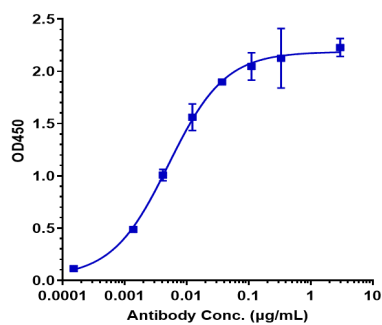
Images



Anti-CEACAM6 / CD66c Reference Antibody (tinurilimab) on SDS-PAGE under reducing (R) condition. The gel was stained with Coomassie Blue. The purity of the protein is greater than 95%



The purity of Anti-CEACAM6 / CD66c Reference Antibody (tinurilimab) is more than 95.93% ,determined by SEC-HPLC.



Immobilized human CEACAM6 His at 2 µg/mL can bind Anti-CEACAM6 / CD66c Reference Antibody (tinurilimab),EC50=0.005084 µg/mL

Please note: All products are 'FOR RESEARCH USE ONLY. NOT FOR USE IN DIAGNOSTIC OR THERAPEUTIC PROCEDURES'.