

# Anti-CEACAM5 / CEA / CD66e Reference Antibody (tusamitamab)

Recombinant Antibody  
Catalog # APR10102

## Product Information

---

<b>Application</b>	FC, Kinetics, Animal Model
<b>Primary Accession</b>	<a href="#">P06731</a>
<b>Reactivity</b>	Human
<b>Clonality</b>	Monoclonal
<b>Isotype</b>	IgG1
<b>Calculated MW</b>	76796

## Additional Information

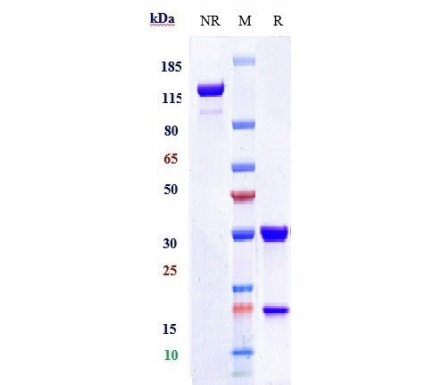
---

<b>Target/Specificity</b>	CEACAM5 / CEA / CD66e
<b>Endotoxin Conjugation</b>	Unconjugated
<b>Expression system</b>	CHO Cell
<b>Format</b>	Purified monoclonal antibody supplied in PBS, pH6.0, without preservative. This antibody is purified through a protein A column.

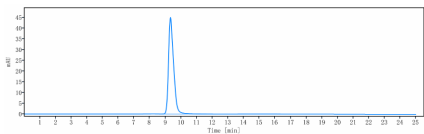
## Protein Information

---

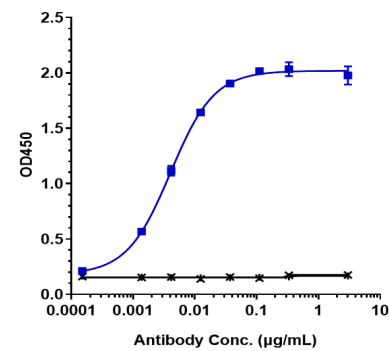
<b>Name</b>	CEACAM5 ( <a href="#">HGNC:1817</a> )
<b>Function</b>	Cell surface glycoprotein that plays a role in cell adhesion, intracellular signaling and tumor progression (PubMed: <a href="#">10864933</a> , PubMed: <a href="#">10910050</a> , PubMed: <a href="#">2803308</a> ). Mediates homophilic and heterophilic cell adhesion with other carcinoembryonic antigen-related cell adhesion molecules, such as CEACAM6 (PubMed: <a href="#">2803308</a> ). Plays a role as an oncogene by promoting tumor progression; induces resistance to anoikis of colorectal carcinoma cells (PubMed: <a href="#">10910050</a> ).
<b>Cellular Location</b>	Cell membrane; Lipid-anchor, GPI-anchor. Apical cell membrane. Cell surface Note=Localized to the apical glycocalyx surface
<b>Tissue Location</b>	Expressed in columnar epithelial and goblet cells of the colon (at protein level) (PubMed:10436421). Found in adenocarcinomas of endodermally derived digestive system epithelium and fetal colon.



Anti-CEACAM5 / CEA / CD66e Reference Antibody (tusamitamab) on SDS-PAGE under reducing (R) condition. The gel was stained with Coomassie Blue. The purity of the protein is greater than 95%



The purity of Anti-CEACAM5 / CEA / CD66e Reference Antibody (tusamitamab) is more than 95.93% ,determined by SEC-HPLC.



Immobilized human CEACAM5 His at 2 µg/mL can bind Anti-CEACAM5 / CEA / CD66e Reference Antibody (tusamitamab),EC50=0.00402 µg/mL

Please note: All products are 'FOR RESEARCH USE ONLY. NOT FOR USE IN DIAGNOSTIC OR THERAPEUTIC PROCEDURES'.