

# Anti-Complement C5 Reference Antibody (eculizumab)

Recombinant Antibody

Catalog # APR10107

## Product Information

---

Application	FC, Kinetics, Animal Model
Primary Accession	<a href="#">P01031</a>
Reactivity	Human, Mouse
Clonality	Monoclonal
Isotype	IgG1
Calculated MW	188305

## Additional Information

---

Target/Specificity	Complement C5
Endotoxin Conjugation	Unconjugated
Expression system	CHO Cell
Format	Purified monoclonal antibody supplied in PBS, pH6.0, without preservative. This antibody is purified through a protein A column.

## Protein Information

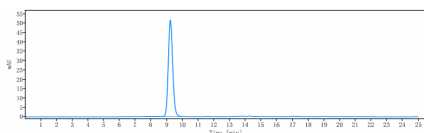
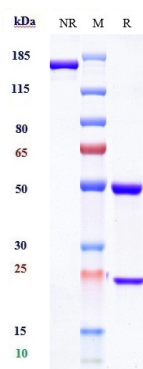
---

Name	C5 {ECO:0000303   PubMed:1984448, ECO:0000312   HGNC:HGNC:1331}
Function	Precursor of the C5a anaphylatoxin and complement C5b components of the complement pathways, which consist in a cascade of proteins that leads to phagocytosis and breakdown of pathogens and signaling that strengthens the adaptive immune system (PubMed: <a href="#">12878586</a> , PubMed: <a href="#">18204047</a> , PubMed: <a href="#">30643019</a> , PubMed: <a href="#">6554279</a> ). Activated downstream of classical, alternative, lectin and GZMK complement pathways (PubMed: <a href="#">12878586</a> , PubMed: <a href="#">18204047</a> , PubMed: <a href="#">30643019</a> , PubMed: <a href="#">6554279</a> ).
Cellular Location	Secreted. [C5a anaphylatoxin]: Secreted

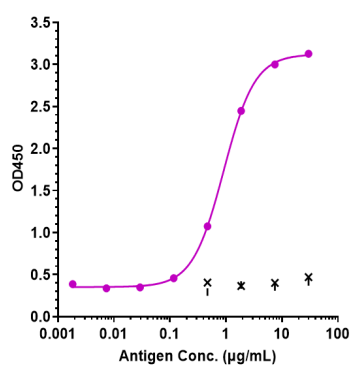
## Images

---

Anti-Complement C5 Reference Antibody (eculizumab) on SDS-PAGE under reducing (R) condition. The gel was stained with Coomassie Blue. The purity of the protein is greater than 95%



The purity of Anti-Complement C5 Reference Antibody (eculizumab) is more than 98.7% ,determined by SEC-HPLC.



Immobilized human CO5 His at 2 µg/mL can bind Anti-Complement C5 Reference Antibody (eculizumab), EC50=0.9163 µg/mL

Please note: All products are 'FOR RESEARCH USE ONLY. NOT FOR USE IN DIAGNOSTIC OR THERAPEUTIC PROCEDURES'.