

Anti-CSF2 / GM-CSF Reference Antibody (lenzilumab)

Recombinant Antibody

Catalog # APR10118

Product Information

Application	FC, Kinetics, Animal Model
Primary Accession	P04141
Reactivity	Human
Clonality	Monoclonal
Isotype	IgG1
Calculated MW	16295

Additional Information

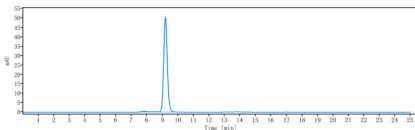
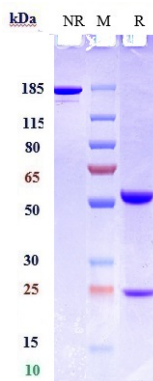
Target/Specificity	CSF2 / GM-CSF
Endotoxin	
Conjugation	Unconjugated
Expression system	CHO Cell
Format	Purified monoclonal antibody supplied in PBS, pH6.0, without preservative. This antibody is purified through a protein A column.

Protein Information

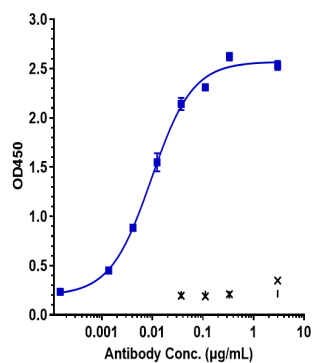
Name	CSF2
Synonyms	GMCSF
Function	Cytokine that stimulates the growth and differentiation of hematopoietic precursor cells from various lineages, including granulocytes, macrophages, eosinophils and erythrocytes.
Cellular Location	Secreted

Images

Anti-CSF2 / GM-CSF Reference Antibody (lenzilumab) on SDS-PAGE under reducing (R) condition. The gel was stained with Coomassie Blue. The purity of the protein is greater than 90%



The purity of Anti-CSF2 / GM-CSF Reference Antibody (lenzilumab) is more than 95%, determined by SEC-HPLC.



Immobilized human GM CSF Nhis at 2 µg/mL can bind Anti-CSF2 / GM-CSF Reference Antibody (lenzilumab), $EC_{50}=0.009573$ µg/mL

Please note: All products are 'FOR RESEARCH USE ONLY. NOT FOR USE IN DIAGNOSTIC OR THERAPEUTIC PROCEDURES'.