

Anti-CD14 Reference Antibody (atibuclimab)

Recombinant Antibody
Catalog # APR10134

Product Information

Application	FC, Kinetics, Animal Model
Primary Accession	P08571
Reactivity	Human
Clonality	Monoclonal
Isotype	IgG4SP
Calculated MW	40076

Additional Information

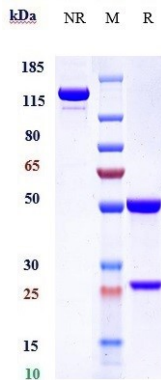
Target/Specificity	CD14
Endotoxin Conjugation	Unconjugated
Expression system	CHO Cell
Format	Purified monoclonal antibody supplied in PBS, pH6.0, without preservative. This antibody is purified through a protein A column.

Protein Information

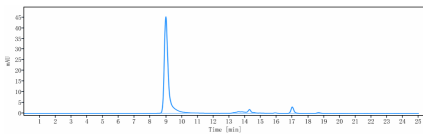
Name	CD14
Function	Coreceptor for bacterial lipopolysaccharide (PubMed: 1698311 , PubMed: 23264655). In concert with LBP, binds to monomeric lipopolysaccharide and delivers it to the LY96/TLR4 complex, thereby mediating the innate immune response to bacterial lipopolysaccharide (LPS) (PubMed: 20133493 , PubMed: 22265692 , PubMed: 23264655). Acts via MyD88, TIRAP and TRAF6, leading to NF-kappa-B activation, cytokine secretion and the inflammatory response (PubMed: 8612135). Acts as a coreceptor for TLR2:TLR6 heterodimer in response to diacylated lipopeptides and for TLR2:TLR1 heterodimer in response to triacylated lipopeptides, these clusters trigger signaling from the cell surface and subsequently are targeted to the Golgi in a lipid-raft dependent pathway (PubMed: 16880211). Binds electronegative LDL (LDL(-)) and mediates the cytokine release induced by LDL(-) (PubMed: 23880187).
Cellular Location	Cell membrane; Lipid-anchor, GPI-anchor. Secreted. Membrane raft. Golgi apparatus. Note=Secreted forms may arise by cleavage of the GPI anchor.
Tissue Location	Detected on macrophages (at protein level) (PubMed:1698311). Expressed strongly on the surface of monocytes and weakly on the surface of

granulocytes; also expressed by most tissue macrophages.

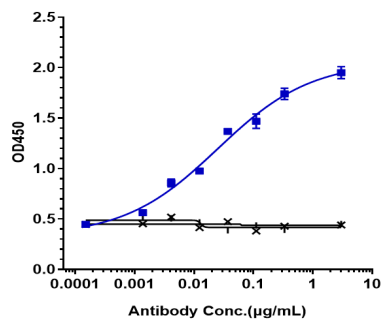
Images



Anti-CD14 Reference Antibody (atibuclimab) on SDS-PAGE under reducing (R) condition. The gel was stained with Coomassie Blue. The purity of the protein is greater than 95%



The purity of Anti-CD14 Reference Antibody (atibuclimab) is more than 95%, determined by SEC-HPLC.



Immobilized human CD14, Fc tag at 2 µg/mL can bind Anti-CD14 Reference Antibody (atibuclimab), EC₅₀=0.0249 µg/mL

Please note: All products are 'FOR RESEARCH USE ONLY. NOT FOR USE IN DIAGNOSTIC OR THERAPEUTIC PROCEDURES'.