

Anti-Complement C3 Reference Antibody (NGM621)

Recombinant Antibody

Catalog # APR10144

Product Information

Application	FC, Kinetics, Animal Model
Primary Accession	P01024
Reactivity	Human
Clonality	Monoclonal
Isotype	IgG1
Calculated MW	187148

Additional Information

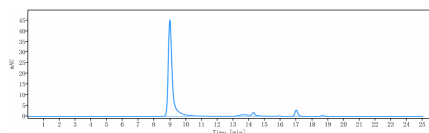
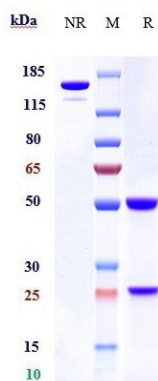
Target/Specificity	Complement C3
Endotoxin Conjugation	Unconjugated
Expression system	CHO Cell
Format	Purified monoclonal antibody supplied in PBS, pH6.0, without preservative. This antibody is purified through a protein A column.

Protein Information

Name	C3 {ECO:0000303 PubMed:2579379, ECO:0000312 HGNC:HGNC:1318}
Function	Precursor of non-enzymatic components of the classical, alternative, lectin and GZMK complement pathways, which consist in a cascade of proteins that leads to phagocytosis and breakdown of pathogens and signaling that strengthens the adaptive immune system.
Cellular Location	Secreted. [C3a anaphylatoxin]: Secreted
Tissue Location	Plasma..

Images

Anti-Complement C3 Reference Antibody (NGM621) on SDS-PAGE under reducing (R) condition. The gel was stained with Coomassie Blue. The purity of the protein is greater than 95%



The purity of Anti-Complement C3 Reference Antibody (NGM621) is more than 95% ,determined by SEC-HPLC.

Image not found : 202311/AP90143-3.jpg

Immobilized human Complement C3, Fc Tag at 2 $\mu\text{g/mL}$ can bind Anti-Complement C3 Reference Antibody (NGM621), $\text{EC}_{50}=0.459 \mu\text{g/mL}$

Please note: All products are 'FOR RESEARCH USE ONLY. NOT FOR USE IN DIAGNOSTIC OR THERAPEUTIC PROCEDURES'.