

Anti-FOLH1 / PSMA Reference Antibody (rosopatamab)

Recombinant Antibody

Catalog # APR10152

Product Information

Application	FC, Kinetics, Animal Model
Primary Accession	Q04609
Clonality	Monoclonal
Isotype	IgG1
Calculated MW	84331

Additional Information

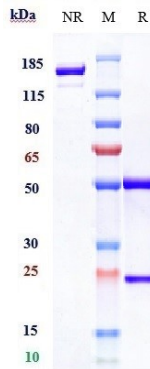
Target/Specificity	FOLH1 / PSMA
Endotoxin	
Conjugation	Unconjugated
Expression system	CHO Cell
Format	Purified monoclonal antibody supplied in PBS, pH6.0, without preservative. This antibody is purified through a protein A column.

Protein Information

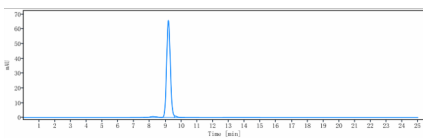
Name	FOLH1 (HGNC:3788)
Synonyms	FOLH, NAALAD1, PSM, PSMA
Function	Has both folate hydrolase and N-acetylated-alpha-linked- acidic dipeptidase (NAALADase) activity. Has a preference for tri- alpha-glutamate peptides. In the intestine, required for the uptake of folate. In the brain, modulates excitatory neurotransmission through the hydrolysis of the neuropeptide, N-aceylaspartylglutamate (NAAG), thereby releasing glutamate. Involved in prostate tumor progression.
Cellular Location	Cell membrane; Single-pass type II membrane protein
Tissue Location	Highly expressed in prostate epithelium. Detected in urinary bladder, kidney, testis, ovary, fallopian tube, breast, adrenal gland, liver, esophagus, stomach, small intestine, colon and brain (at protein level). Detected in the small intestine, brain, kidney, liver, spleen, colon, trachea, spinal cord and the capillary endothelium of a variety of tumors. Expressed specifically in jejunum brush border membranes. In the brain, highly expressed in the ventral striatum and brain stem. Also expressed in fetal liver and kidney Isoform PSMA' is the most abundant form in normal prostate. Isoform PSMA-1 is the most abundant form in primary prostate tumors. Isoform PSMA-9 is

specifically expressed in prostate cancer

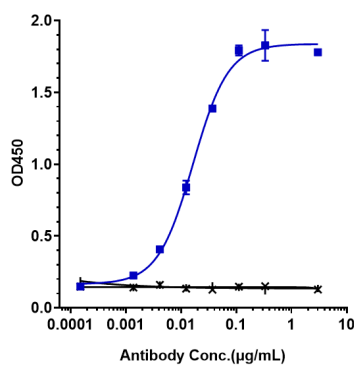
Images



Anti-FOLH1 / PSMA Reference Antibody (rosopatamab) on SDS-PAGE under reducing (R) condition. The gel was stained with Coomassie Blue. The purity of the protein is greater than 95%



The purity of Anti-FOLH1 / PSMA Reference Antibody (rosopatamab) is more than 97.15%, determined by SEC-HPLC.



Immobilized human FOLH1/PSMA, FC Tag at 2 μg/mL can bind Anti-FOLH1 / PSMA Reference Antibody (rosopatamab), $EC_{50}=0.01643 \mu\text{g/mL}$

Please note: All products are 'FOR RESEARCH USE ONLY. NOT FOR USE IN DIAGNOSTIC OR THERAPEUTIC PROCEDURES'.