

Anti-IFNa1 Reference Antibody (sifalimumab)

Recombinant Antibody

Catalog # APR10157

Product Information

Application	FC, Kinetics, Animal Model
Primary Accession	P01562
Reactivity	Human
Clonality	Monoclonal
Isotype	IgG1
Calculated MW	21725

Additional Information

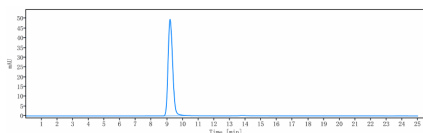
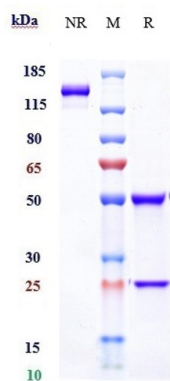
Target/Specificity	IFNa1
Endotoxin	
Conjugation	Unconjugated
Expression system	CHO Cell
Format	Purified monoclonal antibody supplied in PBS, pH6.0, without preservative. This antibody is purified through a protein A column.

Protein Information

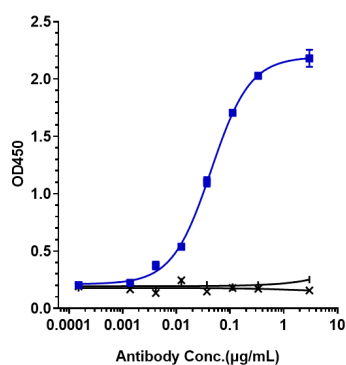
Name	IFNA1
Function	Produced by macrophages, IFN-alpha have antiviral activities. Interferon stimulates the production of two enzymes: a protein kinase and an oligoadenylate synthetase.
Cellular Location	Secreted.

Images

Anti-IFNa1 Reference Antibody (sifalimumab) on SDS-PAGE under reducing (R) condition. The gel was stained with Coomassie Blue. The purity of the protein is greater than 95%



The purity of Anti-IFN α 1 Reference Antibody (sifalimumab) is more than 100%, determined by SEC-HPLC.



Immobilized human IFN α 1, Fc tag at 2 μ g/mL can bind Anti-IFN α 1 Reference Antibody (sifalimumab), $EC_{50}=0.04414$ μ g/mL

Please note: All products are 'FOR RESEARCH USE ONLY. NOT FOR USE IN DIAGNOSTIC OR THERAPEUTIC PROCEDURES'.