

Anti-MSPR / RON / CD136 Reference Antibody (narnatumab)

Recombinant Antibody
Catalog # APR10164

Product Information

Application	FC, Kinetics, Animal Model
Primary Accession	Q04912
Reactivity	Human
Clonality	Monoclonal
Isotype	IgG1
Calculated MW	152241

Additional Information

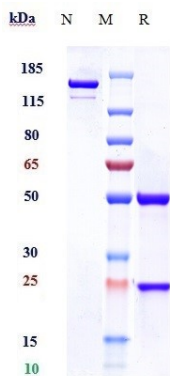
Target/Specificity	MSPR / RON / CD136
Endotoxin Conjugation	Unconjugated
Expression system	CHO Cell
Format	Purified monoclonal antibody supplied in PBS, pH6.0, without preservative. This antibody is purified through a protein A column.

Protein Information

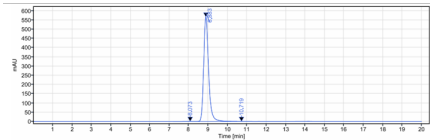
Name	MST1R
Synonyms	PTK8, RON
Function	Receptor tyrosine kinase that transduces signals from the extracellular matrix into the cytoplasm by binding to MST1 ligand. Regulates many physiological processes including cell survival, migration and differentiation. Ligand binding at the cell surface induces autophosphorylation of RON on its intracellular domain that provides docking sites for downstream signaling molecules. Following activation by ligand, interacts with the PI3-kinase subunit PIK3R1, PLCG1 or the adapter GAB1. Recruitment of these downstream effectors by RON leads to the activation of several signaling cascades including the RAS-ERK, PI3 kinase-AKT, or PLCgamma-PKC. RON signaling activates the wound healing response by promoting epithelial cell migration, proliferation as well as survival at the wound site. Also plays a role in the innate immune response by regulating the migration and phagocytic activity of macrophages. Alternatively, RON can also promote signals such as cell migration and proliferation in response to growth factors other than MST1 ligand.

Cellular Location	Membrane; Single-pass type I membrane protein.
Tissue Location	Expressed in colon, skin, lung and bone marrow.

Images



Anti-MSPR / RON / CD136 Reference Antibody (narnatumab) on SDS-PAGE under reducing (R) condition. The gel was stained with Coomassie Blue. The purity of the protein is greater than 95%



The purity of Anti-MSPR / RON / CD136 Reference Antibody (narnatumab)is more than 99.2% ,determined by SEC-HPLC.

Image not found : 202311/AP90163-3.jpg	Immobilized human MSPR / RON / CD136, His Tag at 2 µg/mL can bind Anti-MSPR / RON / CD136 Reference Antibody (narnatumab),EC50=0.01139 µg/mL
--	--

Please note: All products are 'FOR RESEARCH USE ONLY. NOT FOR USE IN DIAGNOSTIC OR THERAPEUTIC PROCEDURES'.