

Anti-CD38 Reference Antibody (isatuximab)

Recombinant Antibody

Catalog # APR10186

Product Information

Application	FC, Kinetics, Animal Model
Primary Accession	P28907
Reactivity	Human
Clonality	Monoclonal
Isotype	IgG1
Calculated MW	34328

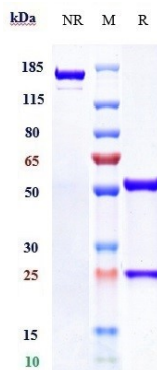
Additional Information

Target/Specificity	CD38
Endotoxin	
Conjugation	Unconjugated
Expression system	CHO Cell
Format	Purified monoclonal antibody supplied in PBS, pH6.0, without preservative. This antibody is purified through a protein A column.

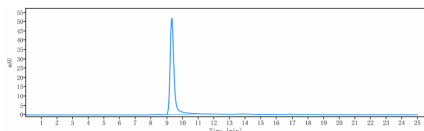
Protein Information

Name	CD38
Function	Synthesizes cyclic ADP-ribose (cADPR), a second messenger for glucose-induced insulin secretion (PubMed: 7961800 , PubMed: 8253715). Synthesizes the Ca(2+) mobilizer nicotinate-adenine dinucleotide phosphate, NAADP(+), from 2'-phospho-cADPR and nicotinic acid, as well as from NADP(+) and nicotinic acid. At both pH 5.0 and pH 7.4 preferentially transforms 2'-phospho-cADPR into NAADP(+), while preferentially cleaving NADP(+) to cADPR and ADPRP rather than into NADDP(+) (PubMed: 16690024). Has cADPR hydrolase activity (PubMed: 7961800 , PubMed: 8253715).
Cellular Location	Cell surface. Membrane; Single-pass type II membrane protein
Tissue Location	Expressed at high levels in pancreas, liver, kidney, brain, testis, ovary, placenta, malignant lymphoma and neuroblastoma.

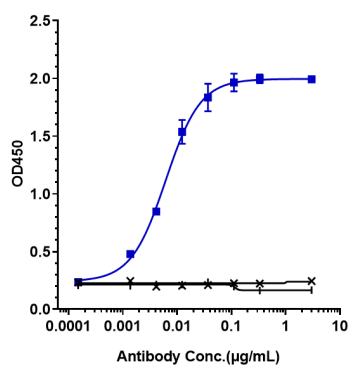
Images



Anti-CD38 Reference Antibody (isatuximab) on SDS-PAGE under reducing (R) condition. The gel was stained with Coomassie Blue. The purity of the protein is greater than 95%



The purity of Anti-CD38 Reference Antibody (isatuximab) is more than 95%, determined by SEC-HPLC.



Immobilized human CD38 Nhis at 2 $\mu\text{g/mL}$ can bind Anti-CD38 Reference Antibody (isatuximab), $\text{EC}_{50}=0.006163 \mu\text{g/mL}$

Please note: All products are 'FOR RESEARCH USE ONLY. NOT FOR USE IN DIAGNOSTIC OR THERAPEUTIC PROCEDURES'.