

# Anti-CD38 Reference Antibody (daratumumab)

Recombinant Antibody

Catalog # APR10187

## Product Information

---

<b>Application</b>	FC, Kinetics, Animal Model
<b>Primary Accession</b>	<a href="#">P28907</a>
<b>Reactivity</b>	Human, Mouse
<b>Clonality</b>	Monoclonal
<b>Isotype</b>	IgG1
<b>Calculated MW</b>	34328

## Additional Information

---

<b>Target/Specificity</b>	CD38
<b>Endotoxin Conjugation</b>	Unconjugated
<b>Expression system</b>	CHO Cell
<b>Format</b>	Purified monoclonal antibody supplied in PBS, pH6.0, without preservative. This antibody is purified through a protein A column.

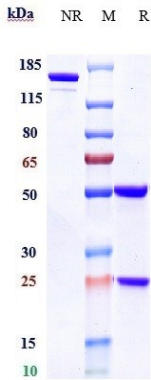
## Protein Information

---

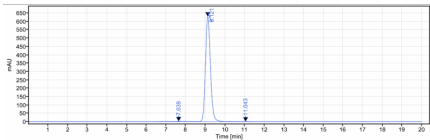
<b>Name</b>	CD38
<b>Function</b>	Multifunctional transmembrane glycoprotein able to exert enzymatic activities and also to mobilize calcium, to transduce signals, to adhere to hyaluronan and to other ligands. Synthesizes cyclic ADP-ribose (cADPR), a second messenger for glucose-induced insulin secretion (PubMed: <a href="#">7961800</a> , PubMed: <a href="#">8253715</a> ). Synthesizes the Ca(2+) mobilizer nicotinate-adenine dinucleotide phosphate, NAADP(+), from 2'-phospho-cADPR and nicotinic acid, as well as from NADP(+) and nicotinic acid. At both pH 5.0 and pH 7.4 preferentially transforms 2'-phospho-cADPR into NAADP(+), while preferentially cleaving NADP(+) to cADPR and ADPRP rather than into NADDP(+) (PubMed: <a href="#">16690024</a> ). Has cADPR hydrolase activity (PubMed: <a href="#">7961800</a> , PubMed: <a href="#">8253715</a> ). Functions also as a receptor that binds the ligand CD31 on endothelial cells, promoting lymphocyte activation, proliferation, and migration across the endothelial barrier (PubMed: <a href="#">9551996</a> ). Involved in the regulation of crucial dendritic cell functions acquired at the mature stage, such as CCL21-driven migration, survival, and Th1-polarizing activity (PubMed: <a href="#">16293598</a> ). In lamina propria T lymphocytes, CD38/CD31 cognate interactions initiate a multistep signaling pathway resulting in activation of LCK and LAT, followed by cytokine release (PubMed: <a href="#">11259373</a> ).

<b>Cellular Location</b>	Cell surface. Cell membrane; Single-pass type II membrane protein. Note=Localizes in membrane lipid domains.
<b>Tissue Location</b>	Expressed at high levels in pancreas, liver, kidney, brain, testis, ovary, placenta, malignant lymphoma and neuroblastoma.

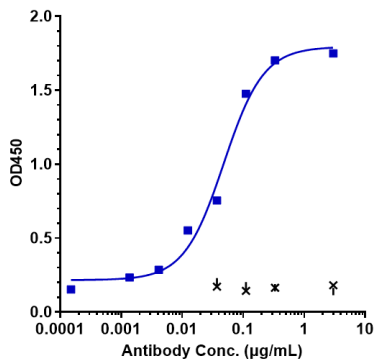
Images



Anti-CD38 Reference Antibody (daratumumab) on SDS-PAGE under reducing (R) condition. The gel was stained with Coomassie Blue. The purity of the protein is greater than 95%



The purity of Anti-CD38 Reference Antibody (daratumumab) is more than 98.99% ,determined by SEC-HPLC.



Immobilized human CD38 NHis at 2 µg/mL can bind Anti-CD38 Reference Antibody (daratumumab),EC50=0.04792 µg/mL

Please note: All products are 'FOR RESEARCH USE ONLY. NOT FOR USE IN DIAGNOSTIC OR THERAPEUTIC PROCEDURES'.