

# Anti-CD38 Reference Antibody (mezagitamab)

Recombinant Antibody  
Catalog # APR10188

## Product Information

---

Application	FC, Kinetics, Animal Model
Primary Accession	<a href="#">P28907</a>
Reactivity	Human, Mouse
Clonality	Monoclonal
Isotype	IgG1
Calculated MW	34328

## Additional Information

---

Target/Specificity	CD38
Endotoxin Conjugation	Unconjugated
Expression system	CHO Cell
Format	Purified monoclonal antibody supplied in PBS, pH6.0, without preservative. This antibody is purified through a protein A column.

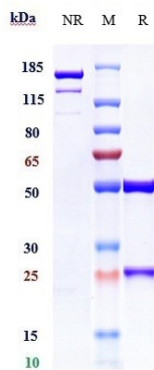
## Protein Information

---

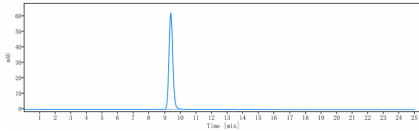
Name	CD38
Function	Synthesizes cyclic ADP-ribose (cADPR), a second messenger for glucose-induced insulin secretion (PubMed: <a href="#">7961800</a> , PubMed: <a href="#">8253715</a> ). Synthesizes the Ca(2+) mobilizer nicotinate-adenine dinucleotide phosphate, NAADP(+), from 2'-phospho-cADPR and nicotinic acid, as well as from NADP(+) and nicotinic acid. At both pH 5.0 and pH 7.4 preferentially transforms 2'-phospho-cADPR into NAADP(+), while preferentially cleaving NADP(+) to cADPR and ADPRP rather than into NADDP(+) (PubMed: <a href="#">16690024</a> ). Has cADPR hydrolase activity (PubMed: <a href="#">7961800</a> , PubMed: <a href="#">8253715</a> ).
Cellular Location	Cell surface. Membrane; Single-pass type II membrane protein
Tissue Location	Expressed at high levels in pancreas, liver, kidney, brain, testis, ovary, placenta, malignant lymphoma and neuroblastoma.

## Images

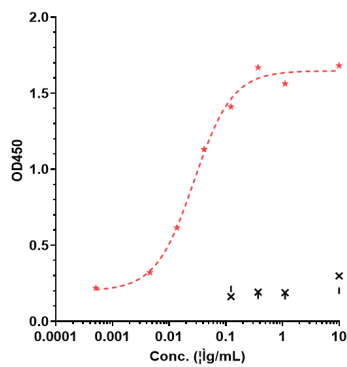
---



Anti-CD38 Reference Antibody (mezagitamab) on SDS-PAGE under reducing (R) condition. The gel was stained with Coomassie Blue. The purity of the protein is greater than 95%



The purity of Anti-CD38 Reference Antibody (mezagitamab) is more than 95%, determined by SEC-HPLC.



Immobilized human CD38 NHis at 2 µg/mL can bind Anti-CD38 Reference Antibody (mezagitamab), EC50=0.0275 µg/mL

Please note: All products are 'FOR RESEARCH USE ONLY. NOT FOR USE IN DIAGNOSTIC OR THERAPEUTIC PROCEDURES'.