

# Anti-ERBB2 / HER2 / CD340 Reference Antibody (disitamab)

Recombinant Antibody  
Catalog # APR10190

## Product Information

---

<b>Application</b>	FC, Kinetics, Animal Model
<b>Primary Accession</b>	<a href="#">P04626</a>
<b>Reactivity</b>	Human, Mouse, Rat
<b>Clonality</b>	Monoclonal
<b>Isotype</b>	IgG1
<b>Calculated MW</b>	137910

## Additional Information

---

<b>Target/Specificity</b>	ERBB2 / HER2 / CD340
<b>Endotoxin Conjugation</b>	Unconjugated
<b>Expression system</b>	CHO Cell
<b>Format</b>	Purified monoclonal antibody supplied in PBS, pH6.0, without preservative. This antibody is purified through a protein A column.

## Protein Information

---

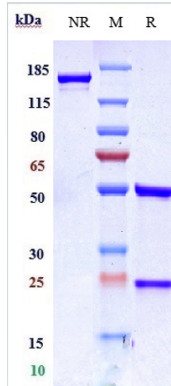
<b>Name</b>	ERBB2
<b>Synonyms</b>	HER2, MLN19, NEU, NGL
<b>Function</b>	Protein tyrosine kinase that is part of several cell surface receptor complexes, but that apparently needs a coreceptor for ligand binding. Essential component of a neuregulin-receptor complex, although neuregulins do not interact with it alone. GP30 is a potential ligand for this receptor. Regulates outgrowth and stabilization of peripheral microtubules (MTs). Upon ERBB2 activation, the MEMO1-RHOA-DIAPH1 signaling pathway elicits the phosphorylation and thus the inhibition of GSK3B at cell membrane. This prevents the phosphorylation of APC and CLASP2, allowing its association with the cell membrane. In turn, membrane-bound APC allows the localization of MACF1 to the cell membrane, which is required for microtubule capture and stabilization.
<b>Cellular Location</b>	Cell membrane; Single-pass type I membrane protein. Cell projection, ruffle membrane; Single-pass type I membrane protein. Note=Internalized from the cell membrane in response to EGF stimulation. [Isoform 2]: Cytoplasm.

Nucleus.

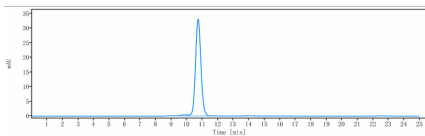
## Tissue Location

Expressed in a variety of tumor tissues including primary breast tumors and tumors from small bowel, esophagus, kidney and mouth.

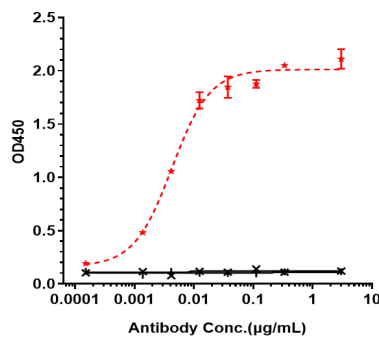
## Images



Anti-ERBB2 / HER2 / CD340 Reference Antibody (disitamab) on SDS-PAGE under reducing (R) condition. The gel was stained with Coomassie Blue. The purity of the protein is greater than 95%



The purity of Anti-ERBB2 / HER2 / CD340 Reference Antibody (disitamab) is more than 98.73%, determined by SEC-HPLC.



Immobilized human ERBB2/HER2/CD340, His Tag at 2  $\mu\text{g/mL}$  can bind Anti-ERBB2 / HER2 / CD340 Reference Antibody (disitamab),  $\text{EC}_{50}=0.00424 \mu\text{g/mL}$

Please note: All products are 'FOR RESEARCH USE ONLY. NOT FOR USE IN DIAGNOSTIC OR THERAPEUTIC PROCEDURES'.