

# Anti-MASP2 Reference Antibody (narsoplimab)

Recombinant Antibody

Catalog # APR10196

## Product Information

---

<b>Application</b>	FC, Kinetics, Animal Model
<b>Primary Accession</b>	<a href="#">O00187</a>
<b>Reactivity</b>	Human, Mouse, Rat
<b>Clonality</b>	Monoclonal
<b>Isotype</b>	IgG4
<b>Calculated MW</b>	75702

## Additional Information

---

<b>Target/Specificity</b>	MASP2
<b>Endotoxin Conjugation</b>	Unconjugated
<b>Expression system</b>	CHO Cell
<b>Format</b>	Purified monoclonal antibody supplied in PBS, pH6.0, without preservative. This antibody is purified through a protein A column.

## Protein Information

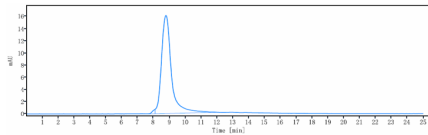
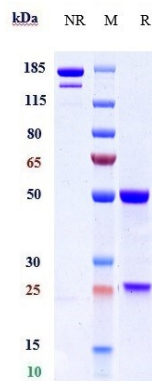
---

<b>Name</b>	MASP2
<b>Function</b>	Serum protease that plays an important role in the activation of the complement system via mannose-binding lectin. After activation by auto-catalytic cleavage it cleaves C2 and C4, leading to their activation and to the formation of C3 convertase.
<b>Cellular Location</b>	Secreted.
<b>Tissue Location</b>	Plasma.

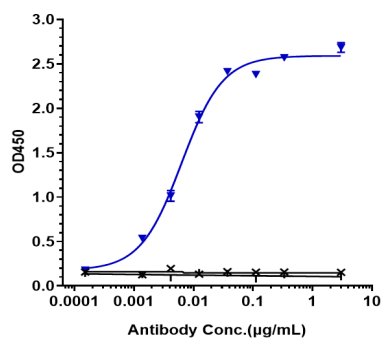
## Images

---

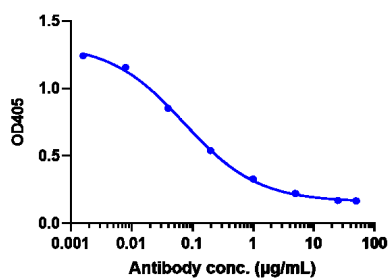
Anti-MASP2 Reference Antibody (narsoplimab) on SDS-PAGE under reducing (R) condition. The gel was stained with Coomassie Blue. The purity of the protein is greater than 95%



The purity of Anti-MASP2 Reference Antibody (narsoplimab) is more than 98.94%, determined by SEC-HPLC.



Immobilized human MASP 2A His at 2 µg/mL can bind Anti-MASP2 Reference Antibody (narsoplimab),  $EC_{50}=0.006278$  µg/mL



C5b-C9 of the MBL pathway can be completely inhibited by Anti-MASP2 Reference Antibody (narsoplimab) with an  $IC_{50}$  of 0.7337 µg/mL.

Please note: All products are 'FOR RESEARCH USE ONLY. NOT FOR USE IN DIAGNOSTIC OR THERAPEUTIC PROCEDURES'.