

Anti-CCL2 / MCP1 Reference Antibody (carlumab)

Recombinant Antibody

Catalog # APR10197

Product Information

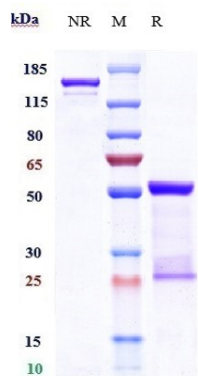
Application	FC, Kinetics, Animal Model
Primary Accession	P13500
Reactivity	Human, Mouse
Clonality	Monoclonal
Isotype	IgG1
Calculated MW	11025

Additional Information

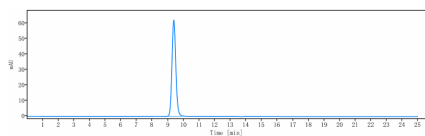
Target/Specificity	CCL2 / MCP1
Endotoxin	
Conjugation	Unconjugated
Expression system	CHO Cell
Format	Purified monoclonal antibody supplied in PBS, pH6.0, without preservative. This antibody is purified through a protein A column.

Protein Information

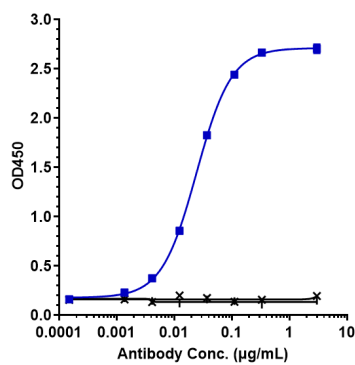
Name	CCL2
Synonyms	MCP1, SCYA2
Function	Acts as a ligand for C-C chemokine receptor CCR2 (PubMed: 10529171 , PubMed: 10587439 , PubMed: 9837883). Signals through binding and activation of CCR2 and induces a strong chemotactic response and mobilization of intracellular calcium ions (PubMed: 10587439 , PubMed: 9837883). Exhibits a chemotactic activity for monocytes and basophils but not neutrophils or eosinophils (PubMed: 8195247 , PubMed: 8627182 , PubMed: 9792674). May be involved in the recruitment of monocytes into the arterial wall during the disease process of atherosclerosis (PubMed: 8107690).
Cellular Location	Secreted
Tissue Location	Expressed in the seminal plasma, endometrial fluid and follicular fluid (at protein level) (PubMed:23765988). Expressed in monocytes (PubMed:2513477).



Anti-CCL2 / MCP1 Reference Antibody (carlumab) on SDS-PAGE under reducing (R) condition. The gel was stained with Coomassie Blue. The purity of the protein is greater than 90%



The purity of Anti-CCL2 / MCP1 Reference Antibody (carlumab) is more than 95% ,determined by SEC-HPLC.



Immobilized human MCP1 His at 2 µg/mL can bind Anti-CCL2 / MCP1 Reference Antibody (carlumab),EC50=0.02438 µg/mL

Please note: All products are 'FOR RESEARCH USE ONLY. NOT FOR USE IN DIAGNOSTIC OR THERAPEUTIC PROCEDURES'.