

Anti-TROP2 Reference Antibody (sacituzumab)

Recombinant Antibody

Catalog # APR10216

Product Information

Application	FC, Kinetics, Animal Model
Primary Accession	P09758
Reactivity	Human
Clonality	Monoclonal
Isotype	IgG1
Calculated MW	35709

Additional Information

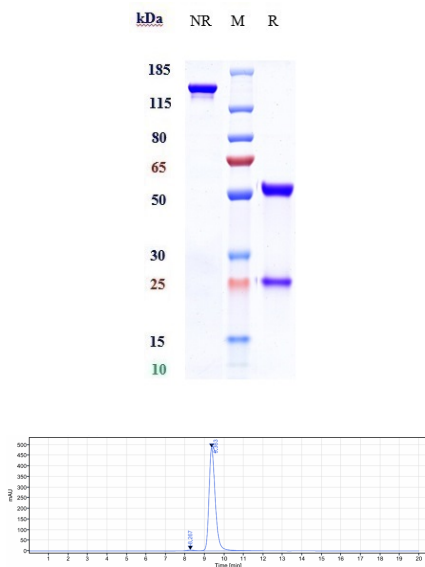
Target/Specificity	TROP2
Endotoxin	
Conjugation	Unconjugated
Expression system	CHO Cell
Format	Purified monoclonal antibody supplied in PBS, pH6.0, without preservative. This antibody is purified through a protein A column.

Protein Information

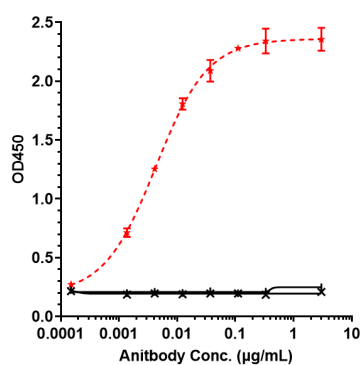
Name	TACSTD2
Synonyms	GA733-1, M1S1, TROP2
Function	May function as a growth factor receptor.
Cellular Location	Membrane; Single-pass type I membrane protein.
Tissue Location	Placenta, pancreatic carcinoma cell lines.

Images

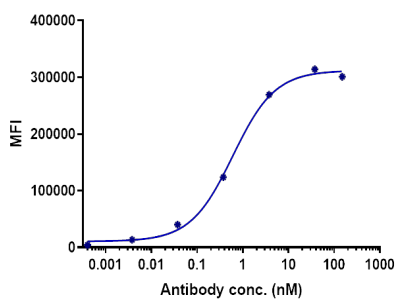
Anti-TROP2 Reference Antibody (sacituzumab) on SDS-PAGE under reducing (R) condition. The gel was stained with Coomassie Blue. The purity of the protein is greater than 95%



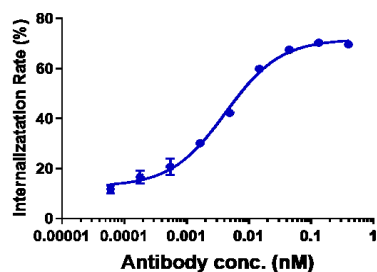
The purity of Anti-TROP2 Reference Antibody (sacituzumab) is more than 96.23%, determined by SEC-HPLC.



Immobilized human TROP2 His at 2 μg/mL can bind Anti-TROP2 Reference Antibody (sacituzumab), $EC_{50}=0.004316 \mu\text{g/mL}$



Human TROP2 HEK293 cells were stained with Anti-TROP2 Reference Antibody (sacituzumab) and negative control protein respectively, washed and then followed by PE and analyzed with FACS, $EC_{276}=0.4071 \mu\text{g/mL}$



The endocytosis ratio sacituzumab by human TROP2 HEK293 increased with the increase of antibody concentration, and the Internalization Rate (%) reached 70% at antibody concentration of 0.4 nM.

Please note: All products are 'FOR RESEARCH USE ONLY. NOT FOR USE IN DIAGNOSTIC OR THERAPEUTIC PROCEDURES'.