

Anti-Mesothelin Reference Antibody (anetumab)

Recombinant Antibody
Catalog # APR10231

Product Information

Application	FC, Kinetics, Animal Model
Primary Accession	Q13421
Reactivity	Human, Mouse
Clonality	Monoclonal
Isotype	IgG1
Calculated MW	68986

Additional Information

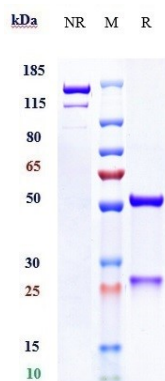
Target/Specificity	Mesothelin
Endotoxin	
Conjugation	Unconjugated
Expression system	CHO Cell
Format	Purified monoclonal antibody supplied in PBS, pH6.0, without preservative. This antibody is purified through a protein A column.

Protein Information

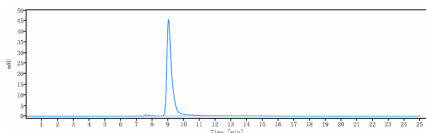
Name	MSLN
Synonyms	MPF
Function	Membrane-anchored forms may play a role in cellular adhesion.
Cellular Location	Cell membrane; Lipid-anchor, GPI-anchor. Golgi apparatus [Isoform 3]: Secreted.
Tissue Location	Expressed in lung. Expressed at low levels in heart, placenta and kidney. Expressed in mesothelial cells. Highly expressed in mesotheliomas, ovarian cancers, and some squamous cell carcinomas (at protein level).

Images

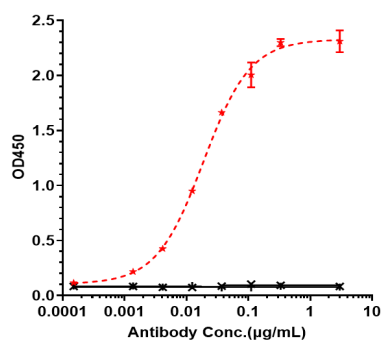
Anti-Mesothelin Reference Antibody (anetumab) on SDS-PAGE under reducing (R) condition. The gel was stained with Coomassie Blue. The purity of the protein is



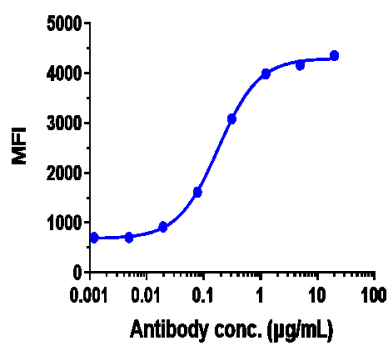
greater than 95%



The purity of Anti-Mesothelin Reference Antibody (anetumab) is more than 98.58%, determined by SEC-HPLC.



Immobilized human Mesothelin His at 2 µg/mL can bind Anti-Mesothelin Reference Antibody (anetumab), $EC_{50}=0.01877$ µg/mL



ASPC-1 cells were stained with Anti-Mesothelin Reference Antibody (anetumab) and negative control protein respectively, washed and then followed by PE and analyzed with FACS, $EC_{291}=0.1822$ µg/mL

Please note: All products are 'FOR RESEARCH USE ONLY. NOT FOR USE IN DIAGNOSTIC OR THERAPEUTIC PROCEDURES'.