

# Anti-CLEC4C Reference Antibody (BIIB059)

Recombinant Antibody  
Catalog # APR10234

## Product Information

<b>Application</b>	FC, Kinetics, Animal Model
<b>Primary Accession</b>	<a href="#">Q8WTT0</a>
<b>Reactivity</b>	Human
<b>Clonality</b>	Monoclonal
<b>Isotype</b>	IgG1
<b>Calculated MW</b>	25038

## Additional Information

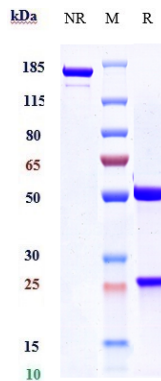
<b>Target/Specificity</b>	CLEC4C
<b>Endotoxin Conjugation</b>	Unconjugated
<b>Expression system</b>	CHO Cell
<b>Format</b>	Purified monoclonal antibody supplied in PBS, pH6.0, without preservative. This antibody is purified through a protein A column.

## Protein Information

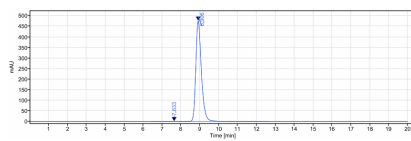
<b>Name</b>	CLEC4C
<b>Synonyms</b>	BDCA2, CLECSF11, CLECSF7, DLEC, HECL
<b>Function</b>	<p>Lectin-type cell surface receptor which may play a role in antigen capturing by dendritic cells (PubMed:<a href="#">11748283</a>, PubMed:<a href="#">21880719</a>, PubMed:<a href="#">25995448</a>). Specifically recognizes non-sialylated galactose- terminated biantennary glycans containing the trisaccharide epitope Gal(beta1-3/4)GlcNAc(beta1-2)Man (PubMed:<a href="#">21880719</a>, PubMed:<a href="#">25995448</a>). Binds to serum IgG (PubMed:<a href="#">25995448</a>). Efficiently targets ligand into antigen-processing and peptide-loading compartments for presentation to T-cells (PubMed:<a href="#">11748283</a>). May mediate potent inhibition of induction of IFN-alpha/beta expression in plasmacytoid dendritic cells (PubMed:<a href="#">11748283</a>, PubMed:<a href="#">21880719</a>). May act as a signaling receptor that activates protein-tyrosine kinases and mobilizes intracellular calcium (PubMed:<a href="#">11748283</a>).</p>
<b>Cellular Location</b>	Cell membrane; Single-pass type II membrane protein
<b>Tissue Location</b>	Expressed in plasmacytoid dendritic cells (PDCs). Constitutively expressed in immature monocyte-derived dendritic cells (iMDDC) and is significantly

down-regulated upon maturation with LPS but not with TNF-alpha.

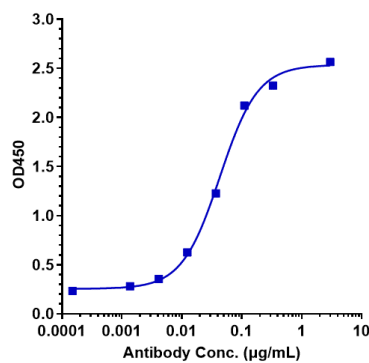
## Images



Anti-CLEC4C Reference Antibody (BIIB059) on SDS-PAGE under reducing (R) condition. The gel was stained with Coomassie Blue. The purity of the protein is greater than 95%



The purity of Anti-CLEC4C Reference Antibody (BIIB059) is more than 99.42%, determined by SEC-HPLC.



Immobilized Ma CLEC4C His at 2 μg/mL can bind Anti-CLEC4C Reference Antibody (BIIB059),  $EC_{50}=0.04315$  μg/mL

Please note: All products are 'FOR RESEARCH USE ONLY. NOT FOR USE IN DIAGNOSTIC OR THERAPEUTIC PROCEDURES'.