

# Anti-IL-6 / IFNb2 Reference Antibody (MEDI 5117)

Recombinant Antibody

Catalog # APR10240

## Product Information

---

<b>Application</b>	FC, Kinetics, Animal Model
<b>Primary Accession</b>	<a href="#">P05231</a>
<b>Reactivity</b>	Human
<b>Clonality</b>	Monoclonal
<b>Isotype</b>	IgG1
<b>Calculated MW</b>	23718

## Additional Information

---

<b>Target/Specificity</b>	IL-6 / IFNb2
<b>Endotoxin</b>	
<b>Conjugation</b>	Unconjugated
<b>Expression system</b>	CHO Cell
<b>Format</b>	Purified monoclonal antibody supplied in PBS, pH6.0, without preservative. This antibody is purified through a protein A column.

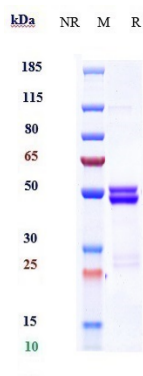
## Protein Information

---

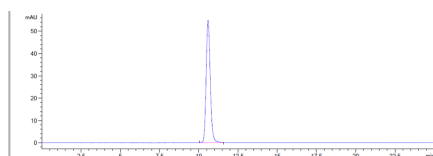
<b>Name</b>	IL6 ( <a href="#">HGNC:6018</a> )
<b>Synonyms</b>	IFNB2
<b>Function</b>	Cytokine with a wide variety of biological functions in immunity, tissue regeneration, and metabolism. Binds to IL6R, then the complex associates to the signaling subunit IL6ST/gp130 to trigger the intracellular IL6-signaling pathway (Probable). The interaction with the membrane-bound IL6R and IL6ST stimulates 'classic signaling', whereas the binding of IL6 and soluble IL6R to IL6ST stimulates 'trans- signaling'. Alternatively, 'cluster signaling' occurs when membrane- bound IL6:IL6R complexes on transmitter cells activate IL6ST receptors on neighboring receiver cells (Probable).
<b>Cellular Location</b>	Secreted.
<b>Tissue Location</b>	Produced by skeletal muscle.

## Images

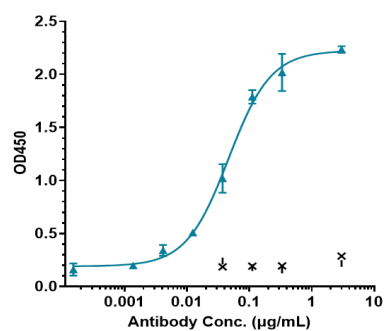
---



Anti-IL-6 / IFN $\beta$ 2 Reference Antibody (MEDI 5117) on SDS-PAGE under reducing (R) condition. The gel was stained with Coomassie Blue. The purity of the protein is greater than 95%



The purity of Anti-IL-6 / IFN $\beta$ 2 Reference Antibody (MEDI 5117) is more than 100% ,determined by SEC-HPLC.



Immobilized human IL-6 His at 2  $\mu$ g/mL can bind Anti-IL-6 / IFN $\beta$ 2 Reference Antibody (MEDI 5117),EC50=0.0463  $\mu$ g/mL

Please note: All products are 'FOR RESEARCH USE ONLY. NOT FOR USE IN DIAGNOSTIC OR THERAPEUTIC PROCEDURES'.