

# Anti-TROP2 Reference Antibody (Datopotamab)

Recombinant Antibody

Catalog # APR10257

## Product Information

---

<b>Application</b>	FC, Kinetics, Animal Model
<b>Primary Accession</b>	<a href="#">P09758</a>
<b>Reactivity</b>	Human
<b>Clonality</b>	Monoclonal
<b>Isotype</b>	IgG1
<b>Calculated MW</b>	35709

## Additional Information

---

<b>Target/Specificity</b>	TROP2
<b>Endotoxin</b>	
<b>Conjugation</b>	Unconjugated
<b>Expression system</b>	CHO Cell
<b>Format</b>	Purified monoclonal antibody supplied in PBS, pH6.0, without preservative. This antibody is purified through a protein A column.

## Protein Information

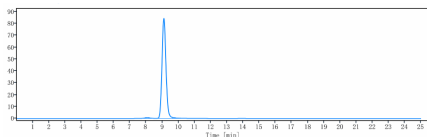
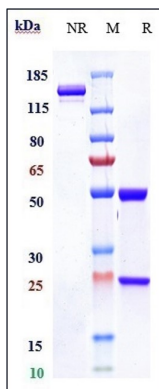
---

<b>Name</b>	TACSTD2
<b>Synonyms</b>	GA733-1, M1S1, TROP2
<b>Function</b>	May function as a growth factor receptor.
<b>Cellular Location</b>	Membrane; Single-pass type I membrane protein.
<b>Tissue Location</b>	Placenta, pancreatic carcinoma cell lines.

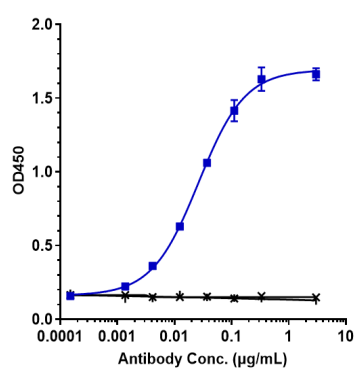
## Images

---

Anti-TROP2 Reference Antibody (Datopotamab) on SDS-PAGE under reducing (R) condition. The gel was stained with Coomassie Blue. The purity of the protein is greater than 95%



The purity of Anti-TROP2 Reference Antibody (Datopotamab) is more than 98.09% ,determined by SEC-HPLC.



Immobilized human TROP2(ECD) His at 2 µg/mL can bind Anti-TROP2 Reference Antibody (Datopotamab),  $EC_{50}=0.0261$  µg/mL

Please note: All products are 'FOR RESEARCH USE ONLY. NOT FOR USE IN DIAGNOSTIC OR THERAPEUTIC PROCEDURES'.