

Anti-IL-6 / IFNb2 Reference Antibody (Medarex patent anti-IL-6)

Recombinant Antibody
Catalog # APR10270

Product Information

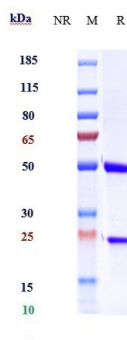
Application	FC, Kinetics, Animal Model
Primary Accession	P05231
Reactivity	Human
Clonality	Monoclonal
Isotype	IgG1
Calculated MW	23718

Additional Information

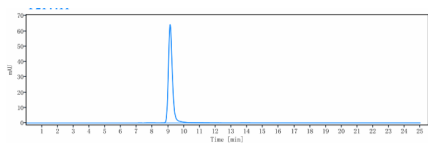
Target/Specificity	IL-6 / IFNb2
Endotoxin Conjugation	Unconjugated
Expression system	CHO Cell
Format	Purified monoclonal antibody supplied in PBS, pH6.0, without preservative. This antibody is purified through a protein A column.

Protein Information

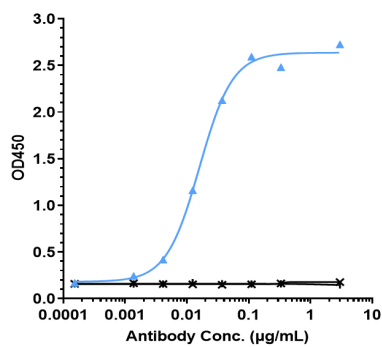
Name	IL6 (HGNC:6018)
Synonyms	IFNB2
Function	Cytokine with a wide variety of biological functions in immunity, tissue regeneration, and metabolism. Binds to IL6R, then the complex associates to the signaling subunit IL6ST/gp130 to trigger the intracellular IL6-signaling pathway (Probable). The interaction with the membrane-bound IL6R and IL6ST stimulates 'classic signaling', whereas the binding of IL6 and soluble IL6R to IL6ST stimulates 'trans- signaling'. Alternatively, 'cluster signaling' occurs when membrane- bound IL6:IL6R complexes on transmitter cells activate IL6ST receptors on neighboring receiver cells (Probable).
Cellular Location	Secreted.
Tissue Location	Produced by skeletal muscle.



Anti-IL-6 / IFN γ 2 Reference Antibody (Medarex patent anti-IL-6) on SDS-PAGE under reducing (R) condition. The gel was stained with Coomassie Blue. The purity of the protein is greater than 95%



The purity of Anti-IL-6 / IFN γ 2 Reference Antibody (Medarex patent anti-IL-6) is more than 99.56% ,determined by SEC-HPLC.



Immobilized human IL-6 His at 2 μ g/mL can bind Anti-IL-6 / IFN γ 2 Reference Antibody (Medarex patent anti-IL-6),EC50=0.01594 μ g/mL

Please note: All products are 'FOR RESEARCH USE ONLY. NOT FOR USE IN DIAGNOSTIC OR THERAPEUTIC PROCEDURES'.