

Anti-IL-1RL2 / IL-36R Reference Antibody (spesolimab)

Recombinant Antibody

Catalog # APR10275

Product Information

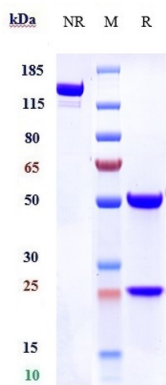
Application	FC, Kinetics, Animal Model
Primary Accession	Q9HB29
Reactivity	Human
Clonality	Monoclonal
Isotype	IgG1
Calculated MW	65405

Additional Information

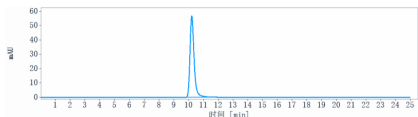
Target/Specificity	IL-1RL2 / IL-36R
Endotoxin Conjugation	Unconjugated
Expression system	CHO Cell
Format	Purified monoclonal antibody supplied in 100mM Pro-Ac, 20mM Arg, pH5.0, without preservative. This antibody is purified through a protein A column.

Protein Information

Name	IL1RL2
Synonyms	IL1RRP2
Function	Receptor for interleukin-36 (IL36A, IL36B and IL36G). After binding to interleukin-36 associates with the coreceptor IL1RAP to form the interleukin-36 receptor complex which mediates interleukin-36- dependent activation of NF-kappa-B, MAPK and other pathways (By similarity). The IL-36 signaling system is thought to be present in epithelial barriers and to take part in local inflammatory response; it is similar to the IL-1 system. Seems to be involved in skin inflammatory response by induction of the IL-23/IL-17/IL-22 pathway.
Cellular Location	Membrane; Single-pass type I membrane protein
Tissue Location	Expressed in synovial fibroblasts and articular chondrocytes. Expressed in keratinocytes and monocyte-derived dendritic cells. Expressed in monocytes and myeloid dendritic cells; at protein level.



Anti-IL-1RL2 / IL-36R Reference Antibody (spesolimab) on SDS-PAGE under reducing (R) condition. The gel was stained with Coomassie Blue. The purity of the protein is greater than 90%



The purity of Anti-IL-1RL2 / IL-36R Reference Antibody (spesolimab) is more than 95% ,determined by SEC-HPLC.

Please note: All products are 'FOR RESEARCH USE ONLY. NOT FOR USE IN DIAGNOSTIC OR THERAPEUTIC PROCEDURES'.