

# Anti-SLC2A8 Reference Antibody (VB1-050)

Recombinant Antibody

Catalog # APR10293

## Product Information

---

<b>Application</b>	FC, Kinetics, Animal Model
<b>Primary Accession</b>	<a href="#">Q9NY64</a>
<b>Reactivity</b>	Human
<b>Clonality</b>	Monoclonal
<b>Isotype</b>	IgG1
<b>Calculated MW</b>	50819

## Additional Information

---

<b>Target/Specificity</b>	SLC2A8
<b>Endotoxin</b>	
<b>Conjugation</b>	Unconjugated
<b>Expression system</b>	CHO Cell
<b>Format</b>	Purified monoclonal antibody supplied in PBS, pH6.0, without preservative. This antibody is purified through a protein A column.

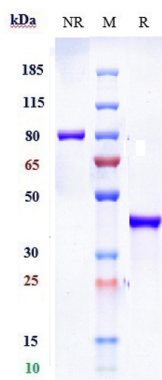
## Protein Information

---

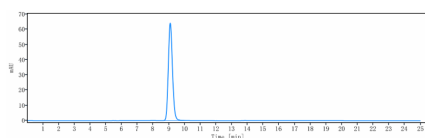
<b>Name</b>	SLC2A8 ( <a href="#">HGNC:13812</a> )
<b>Function</b>	Insulin-regulated facilitative hexose transporter that mediates the transport of glucose and fructose (By similarity). Facilitates hepatic influx of dietary trehalose, which in turn inhibits glucose and fructose influx triggering a starvation signal and hepatic autophagy through activation of AMPK and ULK1 (PubMed: <a href="#">27922102</a> ). Also able to mediate the transport of dehydroascorbate.
<b>Cellular Location</b>	Cell membrane {ECO:0000250 UniProtKB:Q9JJZ1}; Multi-pass membrane protein. Cytoplasmic vesicle membrane {ECO:0000250 UniProtKB:Q9JJZ1}; Multi-pass membrane protein. Note=Principally intracellular. May move between intracellular vesicles and the plasma membrane. The dileucine internalization motif is critical for intracellular sequestration {ECO:0000250 UniProtKB:Q9JJZ1}
<b>Tissue Location</b>	Highly expressed in testis, but not in testicular carcinoma. Lower amounts present in most other tissues

## Images

---



Anti-SLC2A8 Reference Antibody (VB1-050) on SDS-PAGE under reducing (R) condition. The gel was stained with Coomassie Blue. The purity of the protein is greater than 90%



The purity of Anti-SLC2A8 Reference Antibody (VB1-050) is more than 95% ,determined by SEC-HPLC.

Please note: All products are 'FOR RESEARCH USE ONLY. NOT FOR USE IN DIAGNOSTIC OR THERAPEUTIC PROCEDURES'.