

Anti-CD2 Reference Antibody (siplizumab)

Recombinant Antibody

Catalog # APR10316

Product Information

Application	FC, Kinetics, Animal Model
Primary Accession	P06729
Reactivity	Human
Clonality	Monoclonal
Isotype	IgG1
Calculated MW	39448

Additional Information

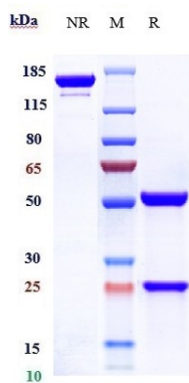
Target/Specificity	CD2
Endotoxin	
Conjugation	Unconjugated
Expression system	CHO Cell
Format	Purified monoclonal antibody supplied in PBS, pH6.0, without preservative. This antibody is purified through a protein A column.

Protein Information

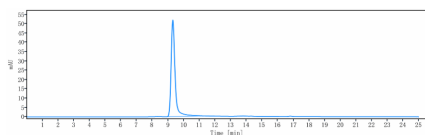
Name	CD2
Synonyms	SRBC
Function	CD2 interacts with lymphocyte function-associated antigen CD58 (LFA-3) and CD48/BCM1 to mediate adhesion between T-cells and other cell types. CD2 is implicated in the triggering of T-cells, the cytoplasmic domain is implicated in the signaling function.
Cellular Location	Cell membrane; Single-pass type I membrane protein
Tissue Location	Expressed in natural killer cells (at protein level).

Images

Anti-CD2 Reference Antibody (siplizumab) on SDS-PAGE under reducing (R) condition. The gel was stained with Coomassie Blue. The purity of the protein is greater than



95%



The purity of Anti-CD2 Reference Antibody (siplizumab) is more than 100% ,determined by SEC-HPLC.

Please note: All products are 'FOR RESEARCH USE ONLY. NOT FOR USE IN DIAGNOSTIC OR THERAPEUTIC PROCEDURES'.