

Anti-LAMP1 / CD107a Reference Antibody (SAR428926)

Recombinant Antibody
Catalog # APR10341

Product Information

Application	FC, Kinetics, Animal Model
Primary Accession	P11279
Reactivity	Human
Clonality	Monoclonal
Isotype	IgG1
Calculated MW	44882

Additional Information

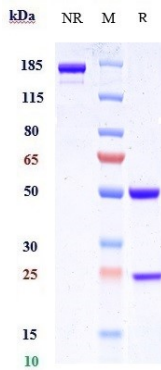
Target/Specificity	LAMP1 / CD107a
Endotoxin Conjugation	Unconjugated
Expression system	CHO Cell
Format	Purified monoclonal antibody supplied in PBS, pH6.0, without preservative. This antibody is purified through a protein A column.

Protein Information

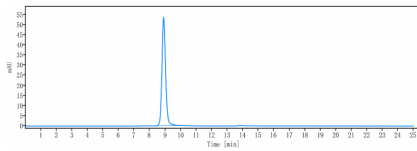
Name	LAMP1 {ECO:0000303 PubMed:23632890, ECO:0000312 HGNC:HGNC:6499}
Function	Lysosomal membrane glycoprotein which plays an important role in lysosome biogenesis, lysosomal pH regulation, autophagy and cholesterol homeostasis (PubMed: 37390818). Acts as an important regulator of lysosomal lumen pH regulation by acting as a direct inhibitor of the proton channel TMEM175, facilitating lysosomal acidification for optimal hydrolase activity (PubMed: 37390818). Also plays an important role in NK-cells cytotoxicity (PubMed: 2022921 , PubMed: 23632890). Mechanistically, participates in cytotoxic granule movement to the cell surface and perforin trafficking to the lytic granule (PubMed: 23632890). In addition, protects NK-cells from degranulation-associated damage induced by their own cytotoxic granule content (PubMed: 23847195). Presents carbohydrate ligands to selectins (PubMed: 7685349).
Cellular Location	Lysosome membrane; Single-pass type I membrane protein. Endosome membrane; Single-pass type I membrane protein. Late endosome membrane; Single-pass type I membrane protein. Cell membrane; Single-pass type I membrane protein. Cytolytic granule membrane; Single-pass type I membrane protein. Note=This protein shuttles between lysosomes, endosomes, and the plasma membrane (By similarity). Colocalizes with

OSBPL1A at the late endosome (PubMed:16176980).
{ECO:0000250|UniProtKB:P05300, ECO:0000269|PubMed:16176980,
ECO:0000269|PubMed:17897319}

Images



Anti-LAMP1 / CD107a Reference Antibody (SAR428926) on SDS-PAGE under reducing (R) condition. The gel was stained with Coomassie Blue. The purity of the protein is greater than 95%



The purity of Anti-LAMP1 / CD107a Reference Antibody (SAR428926) is more than 100% ,determined by SEC-HPLC.

Please note: All products are 'FOR RESEARCH USE ONLY. NOT FOR USE IN DIAGNOSTIC OR THERAPEUTIC PROCEDURES'.