

Anti-Tau Reference Antibody (semorinemab)

Recombinant Antibody

Catalog # APR10348

Product Information

Application	FC, Kinetics, Animal Model
Primary Accession	P10636
Reactivity	Human
Clonality	Monoclonal
Isotype	IgG4
Calculated MW	78928

Additional Information

Target/Specificity	Tau
Endotoxin	
Conjugation	Unconjugated
Expression system	CHO Cell
Format	Purified monoclonal antibody supplied in PBS, pH6.0, without preservative. This antibody is purified through a protein A column.

Protein Information

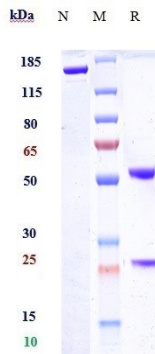
Name	MAPT (HGNC:6893)
Synonyms	MAPTL, MTBT1, TAU
Function	Promotes microtubule assembly and stability, and might be involved in the establishment and maintenance of neuronal polarity (PubMed: 21985311). The C-terminus binds axonal microtubules while the N-terminus binds neural plasma membrane components, suggesting that tau functions as a linker protein between both (PubMed: 21985311 , PubMed: 32961270). Axonal polarity is predetermined by TAU/MAPT localization (in the neuronal cell) in the domain of the cell body defined by the centrosome. The short isoforms allow plasticity of the cytoskeleton whereas the longer isoforms may preferentially play a role in its stabilization.
Cellular Location	Cytoplasm, cytosol. Cell membrane; Peripheral membrane protein; Cytoplasmic side. Cytoplasm, cytoskeleton. Cell projection, axon. Cell projection, dendrite. Secreted Note=Mostly found in the axons of neurons, in the cytosol and in association with plasma membrane components (PubMed:10747907). Can be secreted; the secretion is dependent on protein unfolding and facilitated by the cargo receptor TMED10; it results in protein translocation from the cytoplasm into the ERGIC (endoplasmic reticulum-

Golgi intermediate compartment) followed by vesicle entry and secretion (PubMed:32272059).

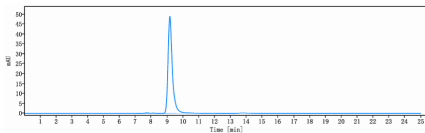
Tissue Location

Expressed in neurons. Isoform PNS-tau is expressed in the peripheral nervous system while the others are expressed in the central nervous system

Images



Anti-Tau Reference Antibody (semorinemab) on SDS-PAGE under reducing (R) condition. The gel was stained with Coomassie Blue. The purity of the protein is greater than 90%



The purity of Anti-Tau Reference Antibody (semorinemab) is more than 95% ,determined by SEC-HPLC.

Please note: All products are 'FOR RESEARCH USE ONLY. NOT FOR USE IN DIAGNOSTIC OR THERAPEUTIC PROCEDURES'.