

# Anti-IL-6Ra / CD126 Reference Antibody (sarilumab)

Recombinant Antibody

Catalog # APR10359

## Product Information

---

<b>Application</b>	FC, Kinetics, Animal Model
<b>Primary Accession</b>	<a href="#">P08887</a>
<b>Reactivity</b>	Human
<b>Clonality</b>	Monoclonal
<b>Isotype</b>	IgG1
<b>Calculated MW</b>	51548

## Additional Information

---

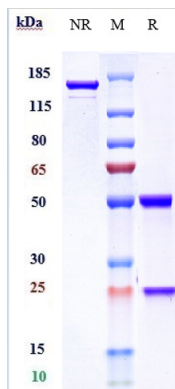
<b>Target/Specificity</b>	IL-6Ra / CD126
<b>Endotoxin</b>	
<b>Conjugation</b>	Unconjugated
<b>Expression system</b>	CHO Cell
<b>Format</b>	Purified monoclonal antibody supplied in PBS, pH6.0, without preservative. This antibody is purified through a protein A column.

## Protein Information

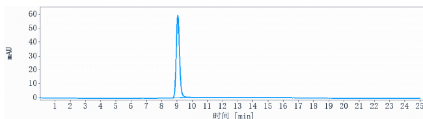
---

<b>Name</b>	IL6R ( <a href="#">HGNC:6019</a> )
<b>Function</b>	Part of the receptor for interleukin 6. Binds to IL6 with low affinity, but does not transduce a signal (PubMed: <a href="#">28265003</a> ). Signal activation necessitate an association with IL6ST. Activation leads to the regulation of the immune response, acute-phase reactions and hematopoiesis (PubMed: <a href="#">30995492</a> , PubMed: <a href="#">31235509</a> ). The interaction with membrane-bound IL6R and IL6ST stimulates 'classic signaling', the restricted expression of the IL6R limits classic IL6 signaling to only a few tissues such as the liver and some cells of the immune system. Whereas the binding of IL6 and soluble IL6R to IL6ST stimulates 'trans- signaling'. Alternatively, 'cluster signaling' occurs when membrane- bound IL6:IL6R complexes on transmitter cells activate IL6ST receptors on neighboring receiver cells (Probable).
<b>Cellular Location</b>	[Isoform 1]: Cell membrane {ECO:0000250 UniProtKB:P22272}; Single-pass type I membrane protein [Soluble interleukin-6 receptor subunit alpha]: Secreted
<b>Tissue Location</b>	[Isoform 2]: Expressed in peripheral blood mononuclear cells and weakly found in urine and serum. 1%-20% of the total sIL6R in plasma is generated by alternative splicing (PubMed:28060820).

## Images



Anti-IL-6Ra / CD126 Reference Antibody (sarilumab) on SDS-PAGE under reducing (R) condition. The gel was stained with Coomassie Blue. The purity of the protein is greater than 95%



The purity of Anti-IL-6Ra / CD126 Reference Antibody (sarilumab) is more than 95% ,determined by SEC-HPLC.

Please note: All products are 'FOR RESEARCH USE ONLY. NOT FOR USE IN DIAGNOSTIC OR THERAPEUTIC PROCEDURES'.