

# Anti-Integrin $\alpha$ L / ITGAL / CD11a Reference Antibody (efalizumab)

Recombinant Antibody  
Catalog # APR10369

## Product Information

Application	FC, Kinetics, Animal Model
Primary Accession	<a href="#">P20701</a>
Reactivity	Human
Clonality	Monoclonal
Isotype	IgG1
Calculated MW	128770

## Additional Information

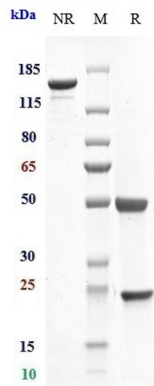
Target/Specificity	Integrin $\alpha$ L / ITGAL / CD11a
Endotoxin Conjugation	Unconjugated
Expression system	CHO Cell
Format	Purified monoclonal antibody supplied in PBS, pH6.0, without preservative. This antibody is purified through a protein A column.

## Protein Information

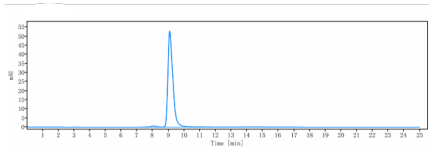
Name	ITGAL ( <a href="#">HGNC:6148</a> )
Synonyms	CD11A
Function	<p>Integrin ITGAL/ITGB2 is a receptor for ICAM1, ICAM2, ICAM3 and ICAM4. Integrin ITGAL/ITGB2 is a receptor for F11R (PubMed:<a href="#">11812992</a>, PubMed:<a href="#">15528364</a>). Integrin ITGAL/ITGB2 is a receptor for the secreted form of ubiquitin-like protein ISG15; the interaction is mediated by ITGAL (PubMed:<a href="#">29100055</a>). Involved in a variety of immune phenomena including leukocyte-endothelial cell interaction, cytotoxic T-cell mediated killing, and antibody dependent killing by granulocytes and monocytes. Contributes to natural killer cell cytotoxicity (PubMed:<a href="#">15356110</a>). Involved in leukocyte adhesion and transmigration of leukocytes including T-cells and neutrophils (PubMed:<a href="#">11812992</a>). Acts as a platform at the immunological synapse to translate TCR engagement and density of the ITGAL ligand ICAM1 into graded adhesion (PubMed:<a href="#">38195629</a>). Required for generation of common lymphoid progenitor cells in bone marrow, indicating a role in lymphopoiesis (By similarity). Integrin ITGAL/ITGB2 in association with ICAM3, contributes to apoptotic neutrophil phagocytosis by macrophages (PubMed:<a href="#">23775590</a>).</p>

Cellular Location	Cell membrane; Single-pass type I membrane protein. Note=Upon antigen recognition by the TCR, is recruited to lipid rafts (PubMed:15684041).
Tissue Location	Leukocytes.

## Images



Anti-Integrin aL / ITGAL / CD11a Reference Antibody (efalizumab) on SDS-PAGE under reducing (R) condition. The gel was stained with Coomassie Blue. The purity of the protein is greater than 95%



The purity of Anti-Integrin aL / ITGAL / CD11a Reference Antibody (efalizumab)is more than 98.77% ,determined by SEC-HPLC.

Please note: All products are 'FOR RESEARCH USE ONLY. NOT FOR USE IN DIAGNOSTIC OR THERAPEUTIC PROCEDURES'.