

Anti-CDH6 / K-Cadherin Reference Antibody (DS-6000a)

Recombinant Antibody

Catalog # APR10370

Product Information

Application	FC, Kinetics, Animal Model
Primary Accession	P55285
Reactivity	Human
Clonality	Monoclonal
Isotype	IgG1
Calculated MW	88309

Additional Information

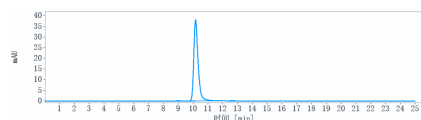
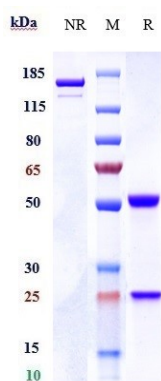
Target/Specificity	CDH6 / K-Cadherin
Endotoxin Conjugation	Unconjugated
Expression system	CHO Cell
Format	Purified monoclonal antibody supplied in PBS, pH6.0, without preservative. This antibody is purified through a protein A column.

Protein Information

Name	CDH6
Function	Cadherins are calcium-dependent cell adhesion proteins. They preferentially interact with themselves in a homophilic manner in connecting cells; cadherins may thus contribute to the sorting of heterogeneous cell types.
Cellular Location	Cell membrane; Single-pass type I membrane protein
Tissue Location	Highly expressed in brain, cerebellum, and kidney. Lung, pancreas, and gastric mucosa show a weak expression. Also expressed in certain liver and kidney carcinomas

Images

Anti-CDH6 / K-Cadherin Reference Antibody (DS-6000a) on SDS-PAGE under reducing (R) condition. The gel was stained with Coomassie Blue. The purity of the protein is greater than 95%



The purity of Anti-CDH6 / K-Cadherin Reference Antibody (DS-6000a) is more than 98.75% ,determined by SEC-HPLC.

Please note: All products are 'FOR RESEARCH USE ONLY. NOT FOR USE IN DIAGNOSTIC OR THERAPEUTIC PROCEDURES'.