

Anti-FceR2 / CD23 Reference Antibody (lumiliximab)

Recombinant Antibody

Catalog # APR10378

Product Information

Application	FC, Kinetics, Animal Model
Primary Accession	P06734
Reactivity	Human
Clonality	Monoclonal
Isotype	IgG1
Calculated MW	36469

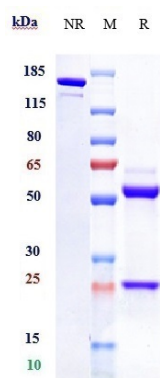
Additional Information

Target/Specificity	FceR2 / CD23
Endotoxin	
Conjugation	Unconjugated
Expression system	CHO Cell
Format	Purified monoclonal antibody supplied in PBS, pH6.0, without preservative. This antibody is purified through a protein A column.

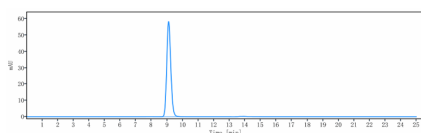
Protein Information

Name	FCER2
Synonyms	CD23A, CLEC4J, FCE2, IGEBF
Function	Low-affinity receptor for immunoglobulin E (IgE) and CR2/CD21. Has essential roles in the regulation of IgE production and in the differentiation of B cells. On B cells, initiates IgE-dependent antigen uptake and presentation to T cells (PubMed: 2167225). On macrophages, upon IgE binding and antigen cross-linking induces intracellular killing of parasites through activation of L-Arginine- nitric oxide pathway (PubMed: 7544003).
Cellular Location	Cell membrane; Single-pass type II membrane protein. Cell membrane; Lipid-anchor. Secreted. Note=Also exists as a soluble excreted form, sCD23
Tissue Location	Detected in urine (at protein level).

Images



Anti-FcεR2 / CD23 Reference Antibody (lumiliximab) on SDS-PAGE under reducing (R) condition. The gel was stained with Coomassie Blue. The purity of the protein is greater than 95%



The purity of Anti-FcεR2 / CD23 Reference Antibody (lumiliximab) is more than 100% ,determined by SEC-HPLC.

Please note: All products are 'FOR RESEARCH USE ONLY. NOT FOR USE IN DIAGNOSTIC OR THERAPEUTIC PROCEDURES'.