

Anti-NOTCH3 Reference Antibody (tarextumab)

Recombinant Antibody
Catalog # APR10410

Product Information

| | |
|--------------------------|----------------------------|
| Application | FC, Kinetics, Animal Model |
| Primary Accession | Q9UM47 |
| Reactivity | Human, Mouse |
| Clonality | Monoclonal |
| Isotype | IgG2SA |
| Calculated MW | 243631 |

Additional Information

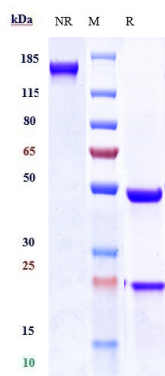
| | |
|----------------------------------|--|
| Target/Specificity | NOTCH3 |
| Endotoxin Conjugation | Unconjugated |
| Expression system | CHO Cell |
| Format | Purified monoclonal antibody supplied in PBS, pH6.0, without preservative. This antibody is purified through a protein A column. |

Protein Information

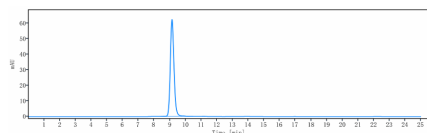
| | |
|--------------------------|--|
| Name | NOTCH3 |
| Function | Functions as a receptor for membrane-bound ligands Jagged1, Jagged2 and Delta1 to regulate cell-fate determination (PubMed: 15350543). Upon ligand activation through the released notch intracellular domain (NICD) it forms a transcriptional activator complex with RBPJ/RBPSUH and activates genes of the enhancer of split locus. Affects the implementation of differentiation, proliferation and apoptotic programs (By similarity). |
| Cellular Location | Cell membrane; Single-pass type I membrane protein |
| Tissue Location | Ubiquitously expressed in fetal and adult tissues. |

Images

Anti-NOTCH3 Reference Antibody (tarextumab) on SDS-PAGE under reducing (R) condition. The gel was stained with Coomassie Blue. The purity of the protein is



greater than 95%



The purity of Anti-NOTCH3 Reference Antibody (tarextumab) is more than 99.3% ,determined by SEC-HPLC.

Please note: All products are 'FOR RESEARCH USE ONLY. NOT FOR USE IN DIAGNOSTIC OR THERAPEUTIC PROCEDURES'.